

1941-1942



# Flowerwood Nursery

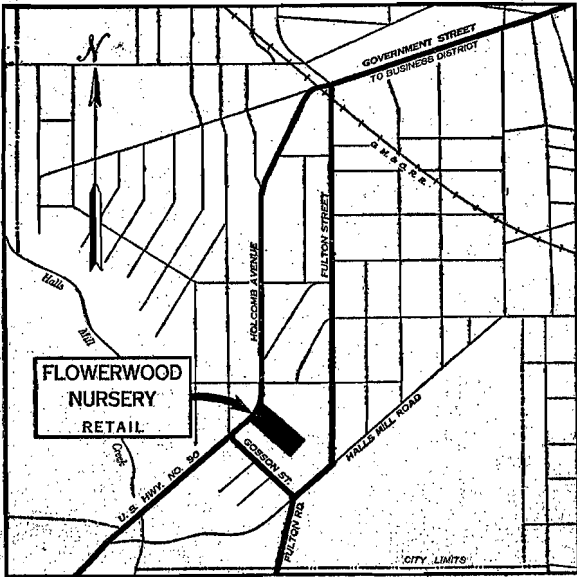
Route 1, Box 522 — Cedar Point Road

Mobile, Ala.

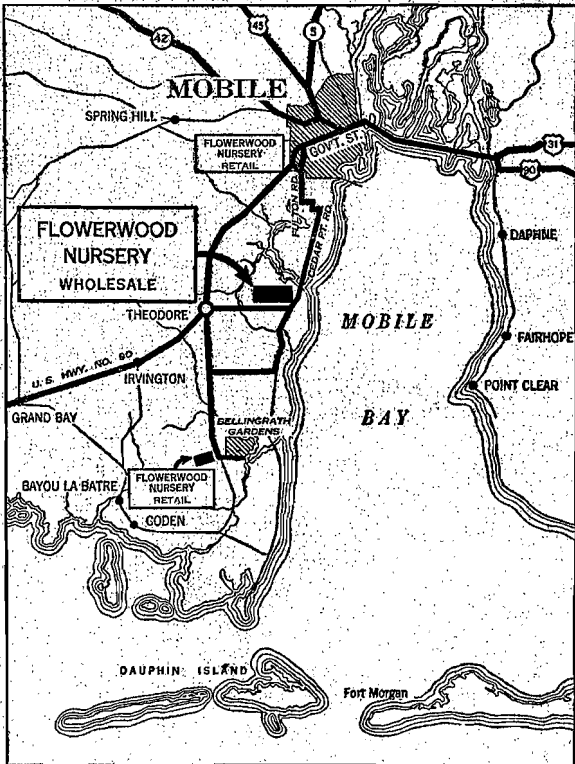
**Azaleas and Camellias  
Our Specialties**

» **WHOLESALE PRICE LIST** «

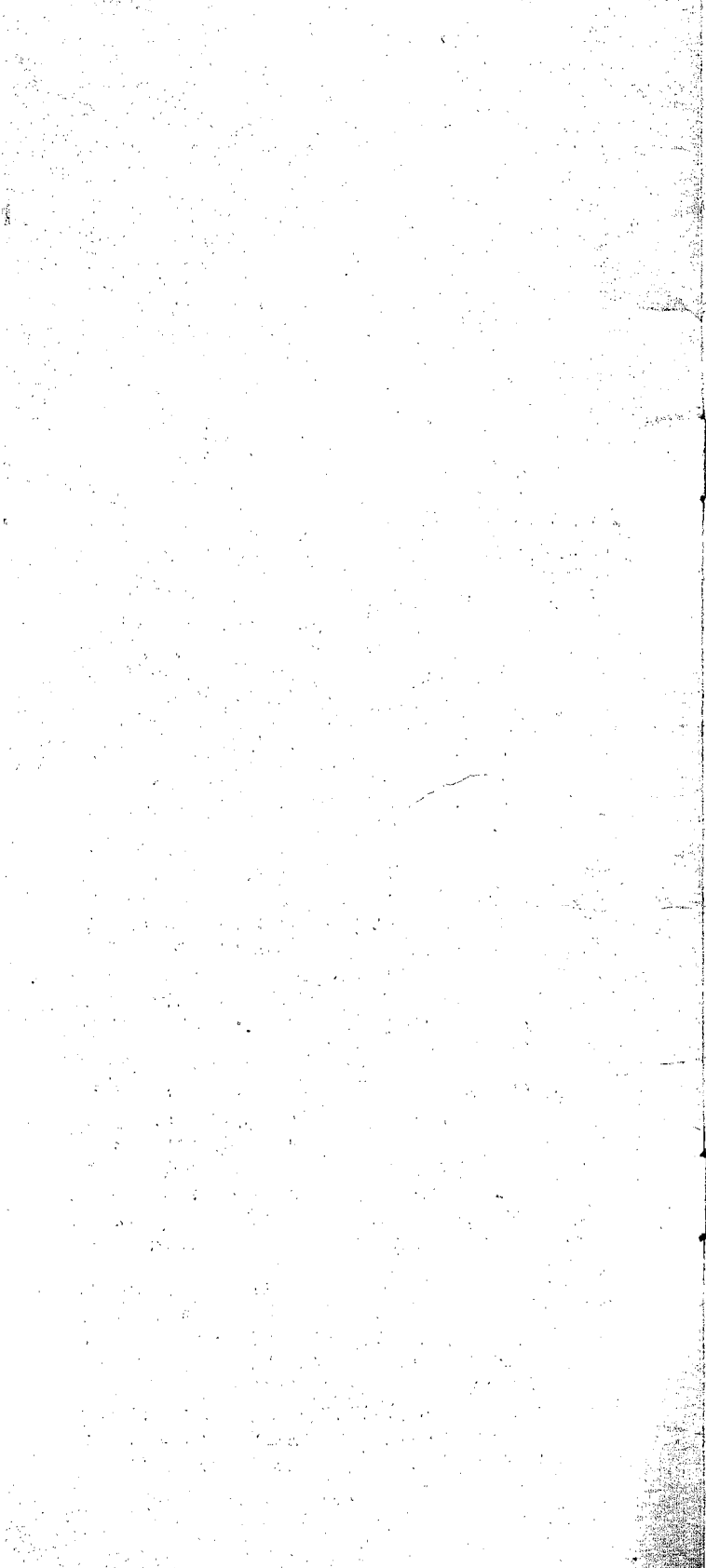
Telephone Belmont 2117-J



*From Mobile Follow This Route*



*From Points South of Mobile, Turn at Flowerwood Arrow Near Theodore*



## VISIT FLOWERWOOD NURSERY AND GARDENS

Flowerwood Nursery specializes in the growing of fine camellias, azaleas, and gardenias, and in addition to many thousands of these plants, has a splendid stock of the other plants listed. You are cordially invited to visit Flowerwood Nursery and inspect our stock. To reach the nursery from the City of Mobile, go to Government Street Loop (U. S. Highway 90), and go out Fulton Road to where this road intersects the Pine Crest Cemetery Road. On this road there are well-marked directions as to how to reach Cedar Point Road, where the nursery is located.

We believe we have one of the finest retail sales yards in the South. It is completely stocked with fine plants, and we are always glad for both retail and wholesale customers to visit this yard. It is located on Holcombe Avenue, and can be conveniently visited on the way to our wholesale nursery. At Government Street Loop, instead of going out Fulton Road, go out Holcombe Avenue. There are a number of streets leading from Holcombe Avenue over to the intersection with Fulton Road and Pine Crest Cemetery Road, referred to above. (See map on back of cover).

To reach our wholesale nursery from points south of Mobile, there is a highway leading directly from U. S. Highway 90 to our nursery. This road leaves Highway 90 at a point one-half mile north of Theodore, Alabama, and is only four and one-half miles to our nursery. The road is marked by a large red arrow with "Flowerwood Nursery" on it.

Visitors to Bellingrath Gardens can go by Flowerwood Nursery very easily, on a road leading in to Mobile that is no longer than the route by U. S. Highway 90. For those visitors to Bellingrath Gardens who are interested in buying azaleas and camellias, we will soon have open a sales yard located very near the Gardens.

While we sell at wholesale only at our nursery on Cedar Point Road, visitors are always welcome to come and inspect at any time both our nursery and our gardens at Dog River. There are many camellias growing in our large greenhouses, where the blooms are perfect. During the blooming season of azaleas and camellias we have thousands of visitors each year. We, of

course, make no charge for admission to the gardens.

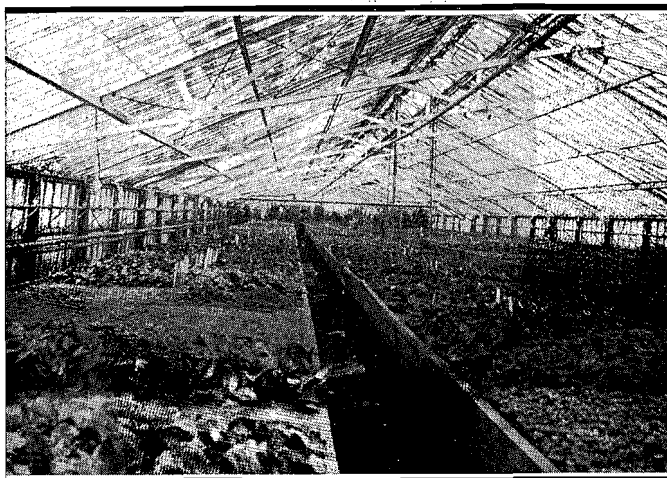
We have a set of slides showing in natural colors many beautiful camellia blossoms and azalea gardens in bloom in and around Mobile. We shall be glad to lend these slides to garden clubs or other clubs interested in showing them.

We invite your particular attention to the large specimen Indica azaleas which we are offering for sale. We have large numbers of Pride of Mobile, Formosa, and Elegans azaleas. These are not lath house plants, but are growing in an azalea garden, and many of them are as large as eight feet in height with an eight foot spread. Prices depend upon the individual size and shape of the bushes, but we are offering them at very reasonable prices. If you have any landscape work or gardens to plant, we feel certain it would be worth your time to make a personal inspection of these bushes. They are all healthy and in the best of growing condition.

We have over 300,000 camellias, including some very fine specimen plants. These include about 300 varieties. Many of our rare camellias are not listed in this catalog, however, as we do not yet have them in sufficient quantities to offer for sale. Any correspondence with reference to rare varieties not listed in our catalog should be sent to Flowerwood Nursery, 705 Holcombe Avenue, Mobile.

## FLOWERWOOD NURSERY

Flowerwood Nursery is owned and operated entirely by American citizens. We have five greenhouses for propagating and growing plants—nearly 26,000 square feet under glass. In addition to these, we have many acres under lath. We also have a great many camellias growing in fields, and a large azalea garden in which our specimen azaleas are grown. Our nursery is located very near Mobile Bay, is surrounded by streams, and we have ideal soil for growing plants. The soil at the nursery is especially good for balling plants with a firm, solid ball of dirt, thereby insuring safe transplanting. We pride ourselves on having one of the largest and best kept nurseries in the South. We should very much appreciate your getting our prices and seeing what we have before you make your purchases.



*One of Our Propagation Houses*

## VISIT THE FAMOUS BELLINGRATH GARDENS

Many people who have travelled the world over consider these the most beautiful gardens in the world, and they should be visited by every lover of nature, and especially by those interested in camellias and azaleas. Bellingrath Gardens contain probably the finest collection of camellias in the world. Every person interested in camellias should plan to spend enough time in these gardens to make a study of their collection.

## CONDITIONS OF SALE

### Prices:

All prices are f. o. b. our nursery, are subject to change without notice, and are made for immediate acceptance. Quantity rates: 50 plants of one variety at 100 rate; and 250 plants of one variety at 1000 rate. We make no charge for packing orders.

### Terms:

(1) Three per cent discount for cash.

(2) Except on purchases of rare varieties of camellias, we give a twenty per cent discount on B. & B. orders picked up at our nursery by purchaser's truck, or shipped in carload lots. Of course, when we give this twenty per cent discount, there is no further discount allowed for cash.

(3) C. O. D.—Those desiring stock to be sent by express C. O. D. should remit twenty-five per cent of the amount of the purchase price when ordering.

### Shipping:

Please tell us how you wish your orders shipped—whether by railroad freight, railway express, or motor freight. In the absence of such instructions, we shall use our best judgment as to the proper method, but we will not be responsible for acts of the carrier.

### Substitutions:

We make no substitutions in orders unless instructed by the purchaser to do so.

### Claims:

Claims must be made immediately upon receipt of goods. If an error has been made by us, please notify us promptly, and we shall take pleasure in adjusting the matter. We do not guarantee plants to live. At no time will we be responsible for more than the purchase price of the stock ordered.

We carefully pack all stock, and make every effort to secure prompt and careful handling by the transportation company. However, our responsibility ceases upon delivery of stock in

good condition to the transportation company. Claims for damage or delay in transit should be filed with the transportation company. In this connection we shall be glad to assist you in any way we can.

Your orders will be acknowledged promptly and shipments made as quickly as possible, so if your order is not acknowledged please advise us immediately. Sometimes, due to inclement weather, or the press of business, there may be a slight delay in shipping, but we assure you this will not be more than is absolutely necessary.

### **Special Notice to California Customers:**

All shipments of camellias to California are required to be fumigated according to the regulations of the California Department of Agriculture. Unless camellias are in a dormant stage, they do not stand this fumigation well. We therefore urge all California customers to order for Fall and Winter or very early Spring delivery, while the plants are still dormant. We will not book any California orders for delivery after the new growth starts on the camellias, unless the customer assumes responsibility for the fumigation treatment and any damage that might result therefrom.

## **FLOWERWOOD NURSERY**

Route 1, Box 522

Cedar Point Road

Mobile, Ala.

Telephone Belmont 2117-J

## AZALEAS

We have one of the largest collections of azaleas in the South—over 500,000 plants ranging from very large specimen azaleas down to lining-out stock, and our prices are as low as those of our competitors.

The Pride of Mobile azalea is probably the most beautiful of all. Its color is a brilliant watermelon red, and it blooms more profusely than any other variety. The true Pride of Mobile, which we have, is a very hardy plant, and stands more cold than the Elegans, Formosa, or any other variety of Indica azalea. It generally blooms later than the Formosa or the Elegans, and the blooms, therefore, are not so often damaged by late cold weather. We have the largest stock of specimen Pride of Mobile azaleas in the country.

All azaleas must be planted in an acid soil. They will prosper either in partial shade or in the full sun, provided the roots are not allowed to be damaged by heat during the hot weather. This can be avoided by a mulch of oak leaves or pine straw. It is not good for azaleas to bank them with leaf mold or to put a high bank of leaves or straw around them. If the dirt or mound is built up around the plant the roots grow to the surface and become exposed to the sun, which causes serious damage in dry spells. Furthermore, if there is a mound built up around the stem of the plant this will cause water to drain away from the plant during dry weather, when moisture is necessary. All azaleas like plenty of water, provided the drainage is good. Kurume azaleas will not survive water standing on the ground around them. Indica azaleas will stand poor drainage better than Kurume azaleas, but it is not to their liking.

As azalea roots are very fine and require a large amount of moisture, the plants do not thrive in close proximity to trees that have surface roots, such as pecan trees, water oaks, and hickory trees. However, they will do well near such trees if they are constantly watered during dry weather.

The Indica azaleas stand much more heat than the Kurume azaleas. They are native to the deep South, while the Kurume azaleas do much better in colder climates.

We have found the safest all round fertilizer for azaleas to be cotton seed meal. It should be scattered on the top of the ground around

the plant and allowed to wash in the soil, without being cultivated. Rotted cow manure is good, also, provided the soil is sufficiently acid, or, if it is not, provided aluminum sulphate is mixed with it to make the soil acid. Azaleas may be fertilized with commercial fertilizers having an acid reaction, but it is very necessary to use great care, because most of the roots are near the surface, and are easily burned.

A spray consisting of one gallon of water, three level tablespoons of Volck, or other white oil emulsion, three level tablespoons of Derris powder, and one teaspoon of Black Leaf 40 will take care of any of the insects and scales that affect azaleas. The spraying should be done just after the blooming season in the Spring, and repeated at intervals of not less than three weeks, until the trouble has been remedied. It is of course necessary to apply the spray with force and directly on the part that is affected, which in most instances is on the bottom of the leaves and in the forks of the twigs.

---

## CAMELLIAS

Camellias will grow and prosper under widely varying conditions as to soil and temperature, but it is absolutely essential that they have good drainage. It is useless to plant a camellia at any place where the water will stand after a hard rain. They will grow in almost dense shade and in the full sun. Camellias will stand a good deal of severe weather, if the cold comes gradually and the plants have an opportunity to harden up before the first severe freeze. One winter we had a sustained cold spell in Mobile for a period of more than a week, during which time the temperature was as low as twelve degrees above zero. None of our camellias was damaged by the cold, and they bloomed perfectly thereafter. However, an early severe freeze, while the growth is still rather tender, will probably cause damage to the buds.

Camellias, like azaleas, prefer an acid soil, but will stand a broader variation of soil, and will grow well even if the soil is just slightly acid.

Camellias are subject to several forms of scale which can be easily controlled by spraying. A spray of one gallon of water, three level tablespoons of Volck, or other white oil emulsion,

and one teaspoon of Black Leaf 40, will be effective. Care should be used not to spray in the hot sun. If the plant is not shaded, it should be sprayed late in the afternoon, if possible. Otherwise the leaves are likely to be badly burned, which will retard the growth of the plant. Generally it is sufficient to spray in the spring and again in the fall, but if a plant is badly infested with disease we recommend spraying every three weeks until the scale is killed.

Sometimes the twigs of camellias die back to a joint. This is due to fungus, which can be controlled by spraying with Bordeaux mixture. It is important to spray in the spring when the first new growth starts, because the fungus develops in the new bud and afterwards the twig dies back to that point. In very small bushes it will often cause a complete loss of the plant.

A thin mulch of oak leaves or pine straw is good for camellias. Almost any fertilizer that does not have an alkaline reaction can be used. We have had good results with cotton seed meal and Vigoro.

In planting camellias it is absolutely necessary to avoid planting them too deep. The importance of this cannot be stressed too much. If the stem is one inch deeper than it was formerly grown, the growth of the plant will be greatly retarded, and if it is planted several inches deeper the plant will die. In setting the plant in its new position, the ball should be level with the ground.

## AZALEA INDICA

Indica azaleas are not hardy in cold climates, but they are adaptable for plantings throughout the entire Gulf Coast section, and along the Atlantic Coast area as far north as North Carolina.

DAPHNE SALMON — Light salmon. Fast, compact, upright grower, very hardy and blooms profusely. One of the finest of the Indica family.



*One of Our Azalea Lath Houses*

DUC DE ROHAN — Salmon pink. Compact grower, small dark green leaves. Does not stand cold very well, but makes a beautiful pot plant.

ELEGANS — Light pink. A fast upright grower, and one of the first to bloom. There are a number of very large bushes in Mobile that are covered with beautiful flowers every year.

FISHER PINK — Light pink. Blooms mid-season about the same time as Pride of Mobile. Large flowers, profuse bloomer, compact grower, very hardy. We think this is one of the best.

FORMOSA — Light purple with pink cast. Large flowers, large dark green leaves, fast dense grower. Very hardy. The best of its color.

INDICA ALBA—Pure white. Light green, hairy leaves, upright grower, midseason bloomer.

LADY EDITH—Pink, shell pink, and white variegated. The individual flowers of this variety are very beautiful. Glossy leaves. Blooms over long period.

LATANA ALBA—White. Dwarf, bushy grower, late bloomer.

MOSS POINT RED—Orange red. Compact grower, dark green leaves, large, waxy flowers, late bloomer.

ORCHID—Light orchid. Medium sized flower, early bloomer, fast upright grower.

PRIDE OF DORKING—Carmine red. Late bloomer, compact grower, does not stand as much cold as some.

PRIDE OF MOBILE—Watermelon pink. The finest and most beautiful of all azaleas. It is a regular and profuse bloomer, and even small bushes are covered with flowers. This variety does not commonly grow in a mound shape, but in artistic tiers, so that when it is in full bloom it looks like a floral design. Very hardy. We have the true Pride of Mobile, which is much better than many watermelon pinks sold for it, which are not as hardy.

PRINCE OF ORANGE—Flowers large and a very rich orange red. Low, compact grower, late bloomer.

## HARDY JAPANESE AZALEAS

These are not dwarf azaleas like the Kurumes, but reach heights of 10 to 12 feet. They are very hardy.

HARDY FIREFLY—Dark scarlet single flower of fair size. Compact grower and extremely hardy.

MACRANTHA—Orange Red. Double medium sized flowers late in season. Compact and fast grower. Very good.

YAYE-GIRI—Salmon red. Hose-in-hose type flowers. Very fast grower, and profuse bloomer. Midseason.

Prices of Indica and Hardy Japanese Azaleas:

	Each	10	100	1000
6-8 inches, C. T. (early Spring 1942 delivery) .....	\$.80	\$7.00	\$60.00	
8-10 inches, B & B.....	\$.30	2.50	20.00	.....
10-12 inches, B & B.....	.40	3.50	30.00	.....
12-18 inches, B & B.....	.50	4.50	40.00	.....
18-24 inches, B & B.....	.75	7.00	65.00	.....

Prices of specimen plants furnished on request. We have a great many very large specimen plants in Pride of Mobile, Elegans, Formosa, Daphne Salmon, and others.

### KURUME AZALEAS

Due to the scarcity of imported stock of all kinds, there was a great demand last season from northern and eastern florists and growers for Kurume azaleas for pot plants. We expect the demand to be even greater this season. These plants have become increasingly popular each year, not merely because they are a satisfactory substitute for imported stock which is no longer available, but also because growers and florists have found Kurume azaleas to be very profitable and popular pot plants. When these plants come into bloom, they are covered with a profusion of beautiful flowers. They require very little care and are not expensive to maintain. They should be potted in a light soil, preferably with some peat mixed in, and kept well-watered. All our azaleas are growing outside, and we do not do any forcing ourselves. This should be borne in mind in ordering, so that the plants may be received by the customer in time for him to force them into bloom to meet his requirements. We have thousands of well-shaped plants in the varieties most in demand for pot plants, such as Coral Bells, Hinodegiri, Salmon Beauty, Pink Pearl, Snow, and others. We feel sure that our customers will find them satisfactory in every way.

In addition to the use of Kurume azaleas for pot plants, they are extensively used for landscape work. They are a dwarf type of azalea, much hardier than the Indica varieties, and are very popular in cooler climates.

**APPLE BLOSSOM**—Flowers a beautiful shade of pink, with lighter shadings toward the center. Compact grower, late bloomer. Semi-double.

**CARMINE PRINCE**—Deep red single flowers of large size. Glossy dark green leaves. Mid-season bloomer.

CHRISTMAS CHEER — Free bloomer of the brightest red; hose-in-hose type flowers. Small dark green leaves. Midseason.

CORAL BELLS—Beautiful shell pink flowers of the hose-in-hose type. Small glossy foliage, and compact grower. One of the best, and very popular.

HINODEGIRI—Brilliant red flowers. Profuse bloomer, low bushy plants. Midseason. Very good for pot plants.

HORTENSIA—Soft, pink, hose-in-hose flowers in dense clusters, a compact grower. Mid-season.

PEACH BLOW—Single flowers of a beautiful shade of peach-pink, having ruffled edges. Early.

PINK PEARL—Beautiful salmon pink, hose-in-hose flowers, shading lighter towards center, produced in large clusters. Fast grower, early.

SALMON BEAUTY—Large hose-in-hose deep salmon flowers, large glossy green leaves. Mid-season.

SALMON QUEEN—Very much like Salmon Beauty, except it has single flowers, and is an earlier bloomer.

SNOW — Pure snow-white hose-in-hose type. Compact grower and profuse bloomer. Mid-season. Very popular.

SWEET BRIER — Medium sized single pink flowers. Very hardy.

Prices of Kurume Azaleas:

	Each	10	100	1000
4-6 inches, bed grown, (no buds), (early Spring 1942 delivery)	.....	\$ .80	\$7.00	\$60.00
4-6 inches, B & B (with buds).....	.....	\$.35	3.00	25.00
6-8 inches, B&B (with buds).....	.....	.45	4.00	35.00
8-10 inches, B&B (with buds).....	.....	.55	5.00	45.00
10-12 inches, B&B (with buds).....	.....	.70	6.50	60.00
12-15 inches, B&B (with buds).....	.....	.90	8.00	75.00
15-18 inches, B&B (with buds).....	.....	1.10	9.50	85.00
18-24 inches, B&B (with buds).....	.....	1.75	15.00	125.00

# CAMELLIA JAPONICA

## CAMELLIA NAMES

It is a well-known fact that the names of camellias are confused. Unfortunately, some varieties may be purchased under several different names from different nurseries. We have made every effort to avoid adding to this confusion, and we have tried to list the varieties in this catalog under the names we believe they are most generally known by in the trade. We have purchased camellias from practically every grower in the United States, and based on our experience and observations, we have listed as many of the synonyms as we know for the varieties we are offering for sale, in an effort to keep our customers from ordering varieties they already have under some other name. We do not believe that most of the varieties of camellias in existence today will ever again be known by the names under which they were listed a century or more ago, for the reason that old textbooks on the subject are not, and never will be, available to most collectors or propagators of camellias, and the few who possess such reference books either have not made much progress in identifying present-day varieties under the names listed in such textbooks, or have not made their discoveries known to the general public. We have never knowingly given a new name to a camellia when we were aware that it was generally known by some name already established, and we shall always try to assist our customers by giving them the benefit of our experience with duplicate names of varieties.

We have purposely avoided designating camellias by numbers, because we find that often when a person has bought a camellia under some number given to it by a particular nursery, he is keenly disappointed to find that he either already has the same camellia under a well-established name, or could have obtained the same camellia at a much cheaper price, had he been advised of the name by which it was generally designated.

We have a collection of colored slides, showing most of the varieties of camellias that we have, so that if anyone is in doubt as to what variety he is buying, we shall be glad to show him an accurate picture of the flower.

We now have in charge of our retail department Mrs. Rosamond Ballard, formerly with Mr. E. A. McIlhenny's Jungle Gardens at Avery

Island, La. She has spent four years studying camellias, and we consider her one of the outstanding experts in this country. She will assist us in our effort to accumulate as quickly as possible the finest collection of camellias in America. She will also be glad to advise and assist both wholesale and retail customers in regard to camellias. Correspondence should be addressed to 705 Holcombe Ave., Mobile, Ala.

### RARE VARIETIES

+ C. M. HOVEY—(PAULINA)—Very double camellia, with a high pointed center. The huge flowers are a uniform shade of brilliant scarlet with pure white blotches. The very large petals are beautifully veined and textured.

Grafted plants on three-year old under- stock.....	<b>Each</b> \$3.50
---	-----------------------



*Camellia C. M. Hovey*

COLLETTI MACULATA—(COLETTI, GIRARD DE BAILLON)—A variegated peonyform dark red and pure white, some flowers having the white predominating and some predominately red. The petals vary from small petals in the center to large flat petals on the outer edge. A very few stamens show in the middle. The leaves are deep green and round, often having a slight

yellow variegation, and the habit of growth of the plant is full and round. This prolific, mid-season blooming camellia is very striking and colorful.

	<b>Each</b>
Grafted plants on three-year old understock.....	\$3.50
Grafted plants on four-year old understock.....	\$4.50

DAI-KAGURA—The earliest blooming of all the camellias. The large blooms vary from a soft light pink to a deep rose red, and the petals are universally irregular. There are hardly ever two flowers alike on the same bush. The texture of the petals is very good and the color always clear. Some of the flowers have a pronounced fragrance.

	<b>Each</b>
Grafted plants on three-year old understock.....	\$3.50

DEBUTANTE—(SARA C. HASTIE)—A very lovely, early blooming, large peonyform flower of delicate solid pink. The light green foliage is very vigorous, with distinctly serrated leaves.

	<b>Each</b>
Grafted plants on three-year old understock.....	\$3.50
Grafted plants on four-year old understock.....	\$4.50

EMPEROR OF RUSSIA—(EMPEROR)—This brilliant scarlet camellia has very large outside petals, with a full, high-centered cluster of smaller recurved petals. The leaves are round and very dark green. Somewhat dwarf in habit of growth.

	<b>Each</b>
Grafted plants on three-year old understock.....	\$3.50

EMPERESS—(LADY CLAIRE, GRANDIFLORA ROSEA)—Very large, 6-7 inches, semi-double flower. Its broad petals of deep rich pink are arranged around a center cluster of yellow stamens. A strikingly beautiful flower.

	<b>Each</b>
8-10 inches.....	\$1.00
Grafted plants on four-year old understock.....	4.00

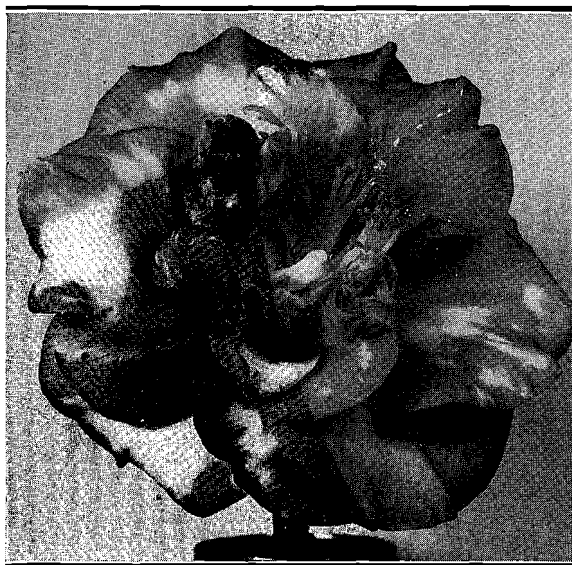
ETHLINGTON WHITE—(WATERLOO)—Very beautiful, semi-double pure white flowers, with large petals of delicate crepe texture, the edges

of the petals being fluted. The flowers have a small cluster of stamens in the center.

Grafted plants on three-year old under-	<b>Each</b>
stock.....	\$3.50

**FANNY BOLIS**—Large semi-double red flowers, boldly blotched with white, with enormous heavy-textured petals loosely arranged around brilliant stamens. The deep green leaves are very thick and rather concave. A vigorous grower, with heavy twigs. This colorful camellia makes a very beautiful shrub.

	<b>Each</b>
3-5 inches.....	\$ .50
6-8 inches.....	.65
8-12 inches.....	1.00
Grafted plants on three-year old under-	
stock.....	3.50



*Camellia Fanny Bolis*

**GOVERNOR MOUTON**—A free-blooming variety, with medium size peonyform flowers, varying from solid dark red to red and white. The flowers resemble somewhat the Colletti Maculata, but the red is not as brilliant, and the outer petals are generally larger. The bushes are rather round in habit of growth, compact and dense.

Grafted plants on three-year old under-	<b>Each</b>
stock.....	\$3.50

JOHN G. DRAYTON — (ALBA SUPERBA, NIVEUS)—Semi-double pure white flower, measuring 4-5 inches across, with enormous petals, and conspicuous yellow stamens. The best white of its type.

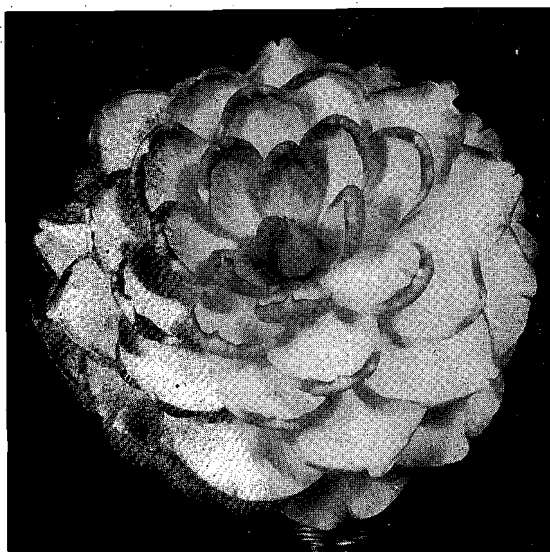
	<b>Each</b>
12-18 inches.....	\$2.50
18-24 inches.....	3.50

KUMASAKA—(BENI-KORAKO, LADY MARION)—One of the finest of all pinks. A deep glowing pink, with very broad outer petals around a large inner circle of petaloids artistically curled. When fully open some stamens show through the petaloids. A very beautiful, rare camellia.

	<b>Each</b>
6-8 inches.....	\$ .40
8-10 inches.....	.75
Grafted plants on three-year old understock.....	3.00

LADY VANSITTART VARIEGATED — A semi-double, large, deep pink and white flower, attractively simple in structure. The petals are slightly crinkled, with pronounced veins, and have a regular group of bright yellow stamens in the center. The dark green leaves are distinctly long, narrow and pointed, and are faintly crinkled or curled.

	<b>Each</b>
Grafted plants on four-year old understock.....	\$4.00



*Camellia Laurel Leaf*

LAUREL LEAF—(LALLAROOK)—This is one of the most exquisite of all camellias. It is the largest full-double variety of which we know. Of perfect symmetry, with a salmon rose-pink center, shading to a deeper rose on the tips of the incurved petals. The petals are beautifully textured, and have very fine veins of deeper rose. The foliage is quite distinctive, with its long, rather narrow light green leaves that are very glossy. The finest greenhouse variety. Our Laurel Leaf is distinctly different, both in foliage and bloom, from what we have purchased as Il Tremonto.

Grafted plants on three-year old under- **Each**  
 stock..... \$4.00



*Camellia Nagasaki*

MARCHIONESS OF EXETER—(MARQUISA)—One of the most outstanding of all camellias. The blooms, which are extremely large, and of a clear glowing pink, are round and very full, and are composed of many small petals interspersed among the larger ones, so as to give the effect of a number of smaller flowers combined to make a larger one.

Grafted plants on three-year old under- **Each**  
 stock..... \$3.50

MARGHARITA CALEONIE—A medium sized, rose formed flower of a very unusual shade of cherry red, with pure white spots and blotches.

Some blooms are solid cherry red. A very vigorous, upright grower, with large round, dark green leaves.

Grafted plants on three-year old under-stock..... **Each**  
**\$3.50**

**NAGASAKI**—(LADY AUDREY BULLER, TENNINKWAN)—A magnificent camellia, with big semi-double blossoms. The large, thick crinkled petals, ranging in color from snow white to carmine, are attractively curled and twisted. The thick, deep glossy green leaves are large and round, and have some bright yellow variegation.

**Each**  
 8-10 inches..... **\$1.00**  
 12-18 inches..... **2.50**  
 18-24 inches..... **4.00**

**PURPLE EMPEROR**—(MAGNOLIA GARDEN'S WM. S. HASTIE, PURPLE DAWN)—An immense, full double, rose-form flower of lake purple, the outer edges of which turn deep purple as the flower gets older. When fully open it shows short stamens in the center. The heavy, lovely textured petals have large veins. The leaves are large, dark green, with thick heavy twigs. A very strong growing plant. This is one of the handsomest of all camellias.

**Each**  
 Grafted plants on three-year old under-stock..... **\$3.50**  
 Grafted plants on four-year old under-stock..... **4.50**



*Camellia Sweeti Vera*

SARA-SA — (CALICO) — A large, semi-double, creamy blush white camellia, striated and flecked with purplish red, with approximately twelve large flat round petals. A very lovely flower.

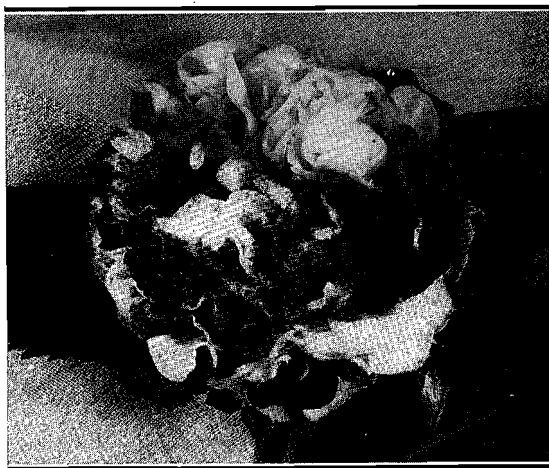
Grafted plants on three-year old under-  
stock..... **Each** \$4.00

SWEETI VERA—A loosely formed, irregularly shaped, full camellia, the ground color of which is light pink. The large petals are flecked and dashed with a deeper shade of pink, and the center petals, which are slightly scalloped, have stamens interspersed among them.

Grafted plants on three-year old under-  
stock..... **Each** \$3.50

VICTOR EMMANUEL—(BLOOD OF CHINA)—  
This huge, peonyform camellia of deep velvety orange-red is generally considered by most nurserymen and collectors in this section of the country as one of the rarest and finest of all camellias. A truly lovely and distinguished flower.

**Each**  
8-10 inches..... \$1.50  
12-15 inches..... 2.00  
Grafted plants on three-year old under-  
stock..... 3.50  
Grafted plants on four-year old under-  
stock..... 4.50



*Camellia William Penn*

WILLIAM PENN — (PURPLE PEONY) — Car-  
nation form camellia, with a center of many  
tightly packed petals, and several rows of guard

petals. Some petals are pure white, some solid dark purplish red, and some deep crimson with large white markings. The leaves are a distinctive dark green, coarsely serrated, some being variegated. Very rare.

	<b>Each</b>
Grafted plants on four-year old understock.....	\$4.00
2 year old grafts on five-year old understock.....	5.00

**SEEDLING "DUNCAN BELL"**—A wonderful new variety, the original of which is in the famous Bellingrath Gardens. We obtained our cuttings from the lady who planted the seed. Mr. Bellingrath considers this one of the most outstanding of all the camellias in his collection. He has honored it with his own name, "Duncan Bell," and planted it next to his beautiful residence, in the most lovely spot in his Gardens. The blossoms are six inches in diameter, a beautiful orange red, with large flat, regularly imbricated outer petals, and numerous irregularly arranged small petals in the center, different from any other camellia we have seen. A fast, tall-growing plant, with giant shiny leaves. If you visit Bellingrath Gardens ask to see this camellia.

We will graft plants of this variety on order.

**COLONEL FIREY**—(MISSISSIPPI HASTIE)—A large fiery red camellia of outstanding beauty. The flowers are perfection in form, with many petals closely imbricated. The leaves are long and narrow, the new growth having a decided red coloring when it is very tender. One of the freest flowering and most admired.

**LADY HUME'S BLUSH**—(BUFF, CARNEA)—A medium sized full double flower of a beautiful shade of blush pink, almost white. This is a most difficult variety to propagate, but once grown it is a gem in any collection.

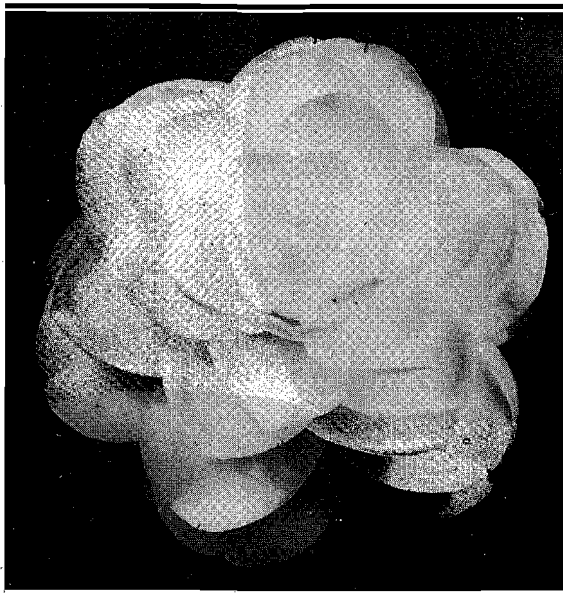
**ROSS**—(Our local nursery name)—A large semi-double salmon pink flower, with occasional small spots of white. The center petals are loosely twisted among golden stamens. Everyone who sees this lovely camellia in bloom immediately wants to own one. The plants do not bloom while young, and are among the latest to bloom in the season. Fine for cut flowers, as the stems are very long.

SCARLETT O'HARA—(Name given by us)—Large, beautiful flower of deep scarlet, with an occasional splotch of white. Perfection form, with many petals closely imbricated. A very rare, exquisite late bloomer.

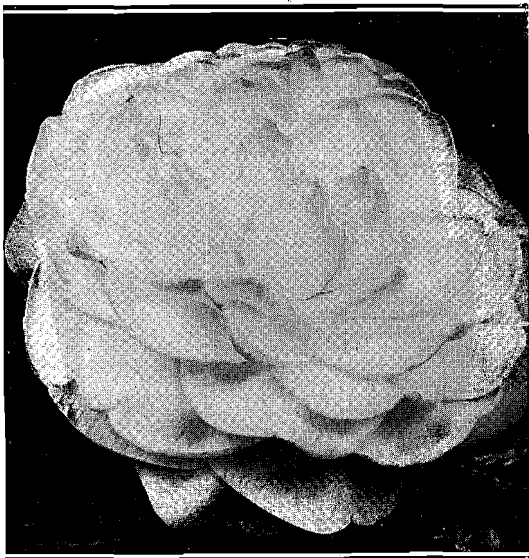
ST. ELMO—(Name given by us)—(MRS. AUGUSTA EVANS WILSON)—Thick peonyform, very large, full, and round. The flowers are a deep beautiful shade of pink, some marked with faint white spots. A tall, fast grower, with large round waxy leaves. The original bush from which our cuttings were taken belonged to Mrs. Augusta Evans Wilson, and we have therefore named this wonderful camellia after her famous novel.

Prices of last 5 varieties listed above:

	Each	10
3- 5 inches, 2½ inch pot.....	\$ .50	\$4.00
6- 8 inches.....	.65	6.00
8-12 inches.....	1.00	.....
12-15 inches.....	1.25	.....
15-18 inches.....	1.50	.....
18-24 inches.....	2.25	.....



*Camellia Lady Hume's Blush*



*Camellia Alba Plena*

## GROUP I

+ ALBA PLENA—The finest of all white camellias. The pure white, wax-like full double flowers are about 4 inches in diameter, of perfect symmetry. Splendid for cut flowers. Harder to propagate than most varieties. We have up to 18-24 inch sizes.

Prices on Alba Plena camellias as shown below, with the exception of 3-5 inch size, from 2 $\frac{1}{4}$  inch pots, which are priced at \$.15 each in all quantities.

ANNA ZUCCHINI—A full double snow-white camellia, with flowers about 3 inches in diameter. Flowers are rose form and are composed of a group of outer petals, with a tuft of narrow petaloids about one-half inch long in the center.

BELLA ROMANA—(MADAME STREKALOFF)—A medium sized camellia, with large light pink petals profusely striped and splashed with streaks of crimson. Some of the California nurseries list this as one of their rarest and best varieties.

CAMEO PINK—(THERESA MASSINA)—A very lovely camellia of a soft, delicate shade of pink. This is an unusual variety in that it resembles a water lily. Full double, symmetrical form, showing golden stamens in center when fully open.

CHANDLERII ELEGANS—A most spectacular camellia. Large, loose peonyform flowers, 5-6 inches in diameter, with broad outer flat petals; and a thick center cluster of petaloids interspersed with yellow stamens. Variegated, cherry red to light pink, splotted with white. A heavy bloomer, with dark green shiny foliage.

CONCORDIA—(PRINCE ALBERT)—A beautiful pink and white variegated flower of peony form. The individual flowers on the bush vary both in form and in color. Occasionally there is an all pink flower, and sometimes there are both peony and rose form flowers on the same plant. The leaves are light green and serrated. They resemble the leaves of Debutante, but are not as sharply serrated, and are smaller. This is a fine greenhouse variety, although it does well outside.

COUNTESS OF ORKNEY — A large double, rose-type white flower, with the petals striped and tinted with pale pink and soft rose. A very slow compact grower that blooms profusely while quite small. Lustrous dark green foliage. This is a fine greenhouse variety, where the flowers reach perfection.

EMPRESS OF INDIA — Peony shaped flower of a very unusual and beautiful shade of salmon-pink. Has several outer rows of imbricated petals, with a full center of smaller petals.



*Camellia Monarch*

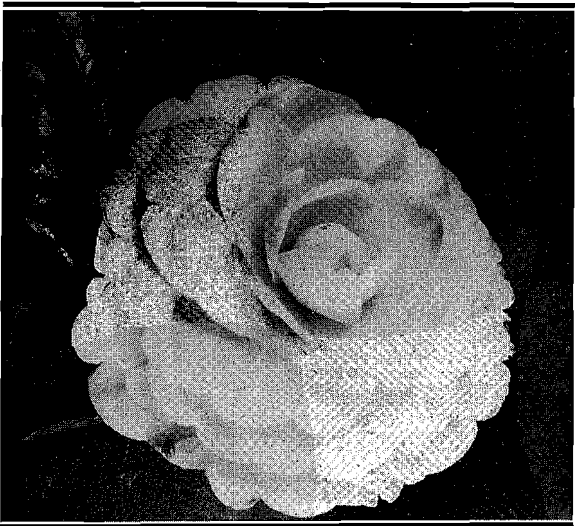
FISHER'S ROSE (Our local nursery name)—Flowers very similar to Marchioness of Exeter, and sometimes sold under this name. Rose colored flowers composed of several rows of guard petals around the outer edge, and a large tuft of petaloids in the center. A tall, fast growing bush, with long leaves.

HERME (Jordan's Pride, Hikari-genji, Jenny Lind)—Very large, semi-double white flowers, with red and pink stripes and splotches. Slightly fragrant. Early bloomer, tall rapid grower. One of the most popular and most satisfactory of all camellias.

LADY ALICE (ALOHA) — Flowers peonyform, lovely shade of red. Up to 12-18 inch sizes.

MONARCH (GUNELLI, HONOR OF AMERICA, RED BALL)—Variegated, deep pink and white, with many clusters of stamens and petals. One of the largest and most beautiful of all camellia blossoms. The plants grow compact and round.

MOSS POINT VARIEGATED (Local nursery name)—Pink and white variegated peonyform flower. It resembles somewhat, both in color and in form, the Chandlerii Elegans, except that the flower is more ball-shaped, or globular, and has more petaloids. A rapid grower, with large glossy, dark green leaves.



*Camellia Pink Perfection.*

OTOME—Full double shell pink, with end of each petal fading to lighter shade. Similar in form and color to Pink Perfection, but with a much larger flower.

PINK PERFECTION—The most universally popular of all camellias. The medium-sized double wax-like flowers, of perfect symmetry and exquisite texture, are a delicate shell pink. Blooms profusely from November to March, and begins blooming when quite young. Perfect for corsages and cut flowers.

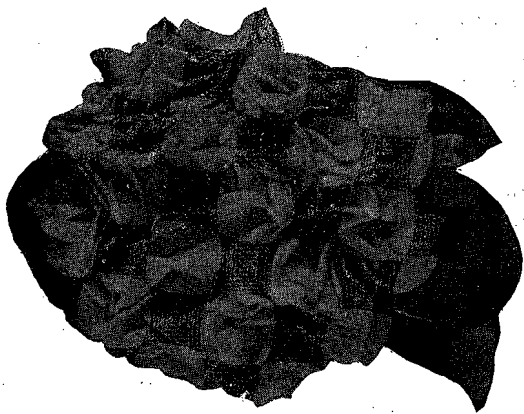
PROF. C. S. SARGENT—Dark crimson, very full, round peony type. Medium to large sized flowers, free bloomer, hardy, very fine.

REINE DES FLEURS — Very double, high centered flowers of rich vermillion red, flaked white. Buds heavily. 12-18 inch size only.

TRICOLOR SIEBOLDI (WAKANOURA VARIEGATED)—Semi-double variegated pink, red, and white, in combination and often solid colors. Has handsome green foliage, with long narrow leaves that are twisted and coarsely serrated.

### PRICES OF GROUP I CAMELLIAS

	Each	10	100
3-5 inches from 2¼ inch pots (except Alba Plena, which see).....	\$1.50		\$12.00
6- 8 inches.....	3.00		25.00
8-12 inches, B & B.....	3.50		30.00
12-18 inches, B & B.....	\$60	5.50	50.00
18-24 inches (branched, no buds).....	1.25	10.00	85.00
2- 3 feet (branched, no buds).....	1.50	12.50	115.00
18-24 inches, Specimen, (buds).....	2.25	20.00	.....
24-30 inches, Specimen, (buds).....	3.50	30.00	.....
30-36 inches, Specimen, (buds).....	4.50	40.00	.....
3-4 feet, Specimen, (buds)	6.50	60.00	.....



*Prof. C. S. Sargent*

## GROUP II

**ABBY WILDER**—Peony shaped double white flowers of medium size. Some of the flowers have an occasional stripe of pink. This is a fast grower, and makes a fine bush.

**ANNA FROST**—Semi-double, large loose peony type, dark blood red in color. Large, round, thick, shiny green leaves.

**AUSTILL PINK**—Medium sized pink, carnation form with stamens. Fast hardy grower. A very attractive camellia.

**BEALLI ROSEA**—Double rose pink, the flowers of which resemble a rosebud upon first opening. The natural habit of this variety is to grow into a round, compact bush.

**CANDIDISSIMA**—Often called Star White, as the petals are arranged so as to resemble a star. Pure white flowers of medium size. A late and profuse bloomer. Good WHITE

**COLONIAL PINK**—This variety is often sold as Gloire de Nantes, but it is not the same. The flowers are medium sized, rose colored, and semi-double. This plant, with its dark green foliage, makes a beautiful evergreen.

**DUC DE ORLEANS (MARGUERITE GUILLON)**—A semi-double pink and white, often solid pink, with stamens interspersed with inner petals. A very free bloomer.

**DUCHESSE DE CAZI (OPELOUSAS PEONY, ALTHEA FLORA)**—Light pink and white, sometimes solid pink, peonyform flower.

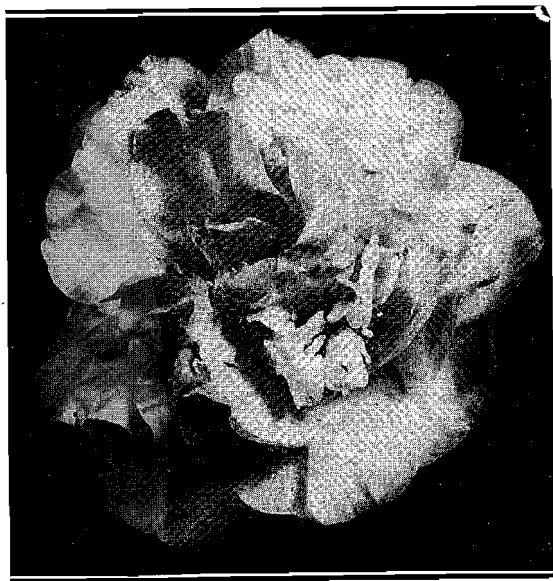
+ ELIZABETH (MONTIRONI) — Porcelain white, occasionally a flower will have some pink in it, or there may be an all pink bloom. The edges of the petals are incurved. A beautiful flower and a handsome evergreen.

GLOIRE DE NANTES (LEANA SUPERBA)—A large irregular peony formed flower, vivid red, with long yellow stamens interspersed with center petals. Thick, dark green, waxy leaves. A very compact grower.

JARVIS RED—Deep scarlet red, semi-double, with yellow stamens. Heavy bloomer. A beautiful and most satisfactory garden variety.

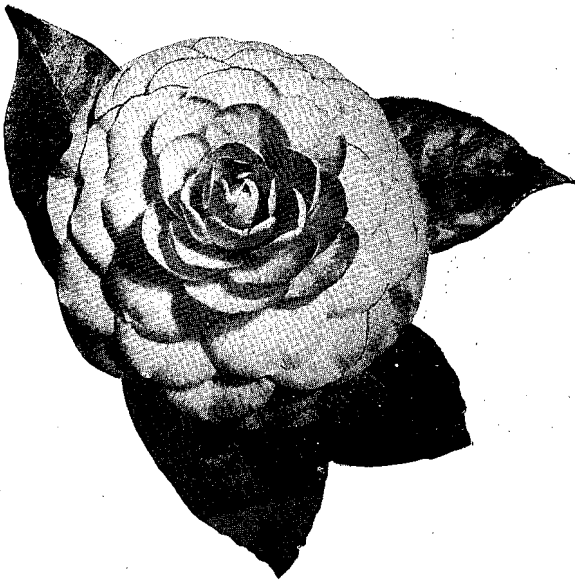
KELLINGTONIA (CHANDLERI) — Red and white peony type flower. Blooms heavily every year. A rapid, compact grower, with dark green, glossy leaves.

MATHOTIANA ALBA — Large double white. A lovely flower, but the buds will not open well unless the plant is grown in a shady place. A vigorous grower, with large leaves of a waxy texture.



*Camellia Nobilissima*

NOBILISSIMA — Pure white, double, with petals twisted and intermixed with golden stamens. Blooms freely and early.



*Camellia Eugene Napoleon*

+ PRINCE EUGENE NAPOLEON (POPE PIUS IX)—Scarlet, full double, heavy bloomer, and good grower. One of the best, and very popular.

ROSE EMERY—Deep red, peonyform flower of medium size. Early bloomer.

SARAH FROST—Full double, rose form camellia of medium size. Deep rose red, very hardy, strong, vigorous grower. *Good*

**PRICES OF GROUP II CAMELLIAS**

	Each	10	100
3-5 inches.....	\$1.20	\$10.00	
6-8 inches.....	2.50	20.00	
8-12 inches, B & B.....	3.00	25.00	
12-18 inches, B & B (branched, no buds).....	4.50	40.00	
18-24 inches, B & B (branched, no buds).....	8.00	60.00	
2-3 feet, B & B (branched, no buds).....	10.00	85.00	
18-24 inches, Specimen, B & B, (buds).....	\$2.00	17.50	150.00
24-30 inches, Specimen, B & B, (buds).....	2.50	20.00	175.00
30-36 inches, Specimen, B & B, (buds).....	3.50	30.00	.....
3-4 feet, Specimen, B & B, (buds).....	5.00	45.00	.....
4-5 feet, Specimen, B & B, (buds).....	7.00	65.00	.....

## CAMELLIA SASANQUA

MINE-NO-YUKI—Solid white, loose to full peony form.

ROSEA—Single pink flowers, with stamens, resembling the Cherokee Rose.

	10	100
6- 8 inches, C. T.....	\$1.50	\$12.50
8-12 inches, C. T.....	1.75	15.00

## BROADLEAVED EVERGREENS

ABELIA GRANDIFLORA (GLOSSY ARBUTUS)—An excellent evergreen shrub for border, hedge, or foundation plantings. The small leaves are bright, glossy green on purplish-red stems. The trumpet shaped rosy-white flowers bloom in May, and the plant continues blooming until late autumn. Very hardy.

	10	100
12-18 inches.....	\$1.25	\$10.00
18-24 inches.....	1.50	12.00
2-3 feet, bushy.....	2.00	17.50

AUCUBA JAPONICA VARIEGATA (GOLD-DUST AUCUBA)—Splendid hardy evergreen plant, with beautiful rich dark green leaves flecked with gold. Should be planted in shady location.

	Each	10
8-12 inches, C. T.....	\$.55	\$5.00
12-18 inches, B & B.....	.80	7.50
18-24 inches, B & B.....	1.10	10.00

BERBERIS THUNBERGII ATROPURPUREA (RED-LEAVED JAPANESE BARBERRY)—The leaves of this beautiful plant are dark bronzed, making it a very colorful plant. It can also be used as a hedge plant, as it does well when trimmed.

	10	100
6- 8 inches, C. T.....	\$.75	\$6.00
8-12 inches, C. T.....	1.00	8.00
12-18 inches, C. T.....	1.25	10.00

BUXUS JAPONICA—A fast growing box with glossy bright green small leaves. A dense compact evergreen especially good for low trimmed hedges. We do not recommend it where there are nematodes.

BUXUS SEMPERVIRENS (ENGLISH BOXWOOD)—A slower growing box than the Japanese box, but a very handsome plant. The leaves

are very dark green and pointed. It is an upright grower, and when small it is especially adaptable as a border plant.

Prices of Both:

	Each	10	100
4- 6 inches, C. T.....	.....	\$ .65	\$5.00
6- 8 inches, C. T.....	.....	.80	6.00
8-10 inches, C. T.....	.....	1.00	8.00
10-12 inches, C. T.....	.....	1.25	10.00
12-18 inches, B & B.....	\$ .85	7.50	.....

**CALLISTEMON (BOTTLE BRUSH)**—This evergreen has narrow, dark green foliage and produces large cylindrical flowers of a brilliant scarlet. As indicated by its name, the flower-spikes are shaped exactly like a bottle brush. A very attractive plant that has to be planted in a permanent location when small, or from a pot, as it does not transplant well.

	10	100
12-18 inches, 3 inch pot.....	\$1.25	\$10.00

**CLEYERA JAPONICA**—Fine compact growing evergreen, with thick dark green glossy leaves, which have a red midrib. The creamy-white fragrant flowers in the late spring are followed by red berries in the summer. Our plants were grown from cuttings off of fine specimen plants.

	Each	10	100
8-12 inches, C. T.....	.....	\$1.00	\$ 8.00
12-18 inches, C. T.....	.....	1.25	10.00
18-24 inches, B & B.....	\$1.00	8.50	.....

**ELAEAGNUS PUNGENS MACULATA (YELLOW CENTERED ELAEAGNUS).**

**ELAEAGNUS PUNGENS VARIEGATA (YELLOW EDGED ELAEAGNUS).**

Both of the above are variegated, one having a yellow center with green on the edges, and the other with the yellow around the green. This is a light colored spreading evergreen shrub that shows up well among darker evergreens.

	Each	10	100
6- 8 inches, C. T.....	.....	\$1.00	\$8.00
8-12 inches, C. T.....	.....	1.25	10.00
18-24 inches, B & B.....	\$1.00	8.50	.....

**GARDENIA FLORIDA**—The very popular Cape Jasmine of the South. Its dark, shiny

foliage and white, sweet scented flowers have made it a favorite for many years.

	Each	10	100
6- 8 inches, C. T.....		\$ .60	\$ 5.00
8-12 inches, C. T.....		.85	7.00
12-18 inches, C. T.....		1.00	9.00
18-24 inches, B & B.....	\$ .50	4.00	.....
2-3 feet, B & B.....	.75	6.00	.....
3-4 feet, B & B.....	1.00	7.50	.....

GARDENIA HADLEY—Large flowering winter forcing gardenia of recent introduction. Highly prized as cut flowers.

	10	100
2½ inch pots.....	\$1.50	\$12.00

GARDENIA "MYSTERY" — Fast becoming the most popular variety. It has the largest and most luxuriant foliage, and a very superior flower. The magnificent snowy white, fragrant blossoms are very large.

	10	100
8-12 inches, C. T.....	\$1.50	\$10.00
12-18 inches, C. T.....	2.00	15.00

GARDENIA VEITCHII — This is a winter blooming variety, which has smaller foliage and does not grow as large as Gardenia "Mystery," but it blooms more profusely. Extensively used by florists.

	10	100
6- 8 inches, 2½ inch pot.....	\$1.25	\$ 9.00
8-10 inches, 3 inch pot.....	1.75	14.00

HIBISCUS SINENSIS — One of the showiest flowering shrubs of the South. A fast growing plant with glossy leaves and producing gorgeous colored flowers 4-5 inches across. They have an abundance of striking flowers throughout the entire summer. Single Red.

	10	100
8-10 inches, in 3 inch pots.....	\$1.10	\$10.00

ILEX CORNUTA BURFORDI (BURFORD'S HOLLY).

ILEX CORNUTA FEMINA—A dwarf compact holly with exceptionally dark, shiny foliage. Very hardy. Older plants produce an abundance of large red berries, which are very showy. Burfordi differs from the regular holly in that it has only one spine to a leaf. A very striking

shrub for foundation plantings, or as lawn specimens.

Prices of both:

	Each	10	100
6- 8 inches, C. T.....		\$1.00	\$ 8.00
8-12 inches, C. T.....		1.25	10.00
18-24 inches, B & B.....	\$.80	7.50	.....
2- 3 feet, B & B.....	1.75	15.00	.....

**ILEX OPACA FEMINA (AMERICAN HOLLY)**—We take our cuttings from trees which have berries, so that our plants will be sure to be berry-producing. This is a beautiful native tree, with attractive dark green leaves. Very hardy.

	10	100
8-12 inches, C. T.....	\$1.20	\$10.00
12-18 inches, C. T.....	1.50	12.00

**ILLICIUM ANISATUM (ANISE TREE)**—A very beautiful evergreen. The broad light green leaves emit an anise fragrance when bruised. A hardy, desirable plant.

	10	100
6- 8 inches, C. T.....	\$1.00	\$ 8.00
8-12 inches, C. T.....	1.25	10.00

**LAUROCERASUS CAROLINIANA (CHERRY LAUREL)**—A splendid broadleaved evergreen tree, with bright, shiny leaves, reaching a height of 30-40 feet. It may be pruned to any desired size or shape, and is a fine hedge plant.

	Each	10	100
6- 8 inches, S.....	\$.40	\$ 3.00	
8-12 inches, S.....	.60	5.00	
12-18 inches, S. T.....	1.25	10.00	
2- 3 feet, B & B.....	\$.55	3.50	30.00

**LIGUSTRUM LUCIDUM COMPACTUM (WAX PRIVET)**—This is the well-known and popular wax privet so extensively planted in the last few years. Its dark green foliage and adaptability to almost any location makes it a very useful shrub.

	Each	10	100
6- 8 inches, C. T.....	\$.40	\$ 2.50	
8-12 inches, C. T.....	.60	5.00	
12-18 inches, C. T.....	1.75	15.00	
18-24 inches, C. T., Field.....	2.50	17.50	
18-24 inches, B & B.....	\$.50	4.00	.....
2- 3 feet, B & B.....	.65	5.00	.....
3- 4 feet, B & B.....	1.00	8.50	.....

**MAGNOLIA FUSCATA (BANANA SHRUB)**—An evergreen shrub or small tree of conical shape growing to about 30 or 40 feet in height. The leaves are small and the foliage dense. In the spring of the year the tree is covered with yellow flowers of banana-like fragrance. A beautiful evergreen and a favorite for many years in the South.

	Each	10	100
6- 8 inches, C. T.....	\$1.00		\$ 8.00
8-12 inches, C. T.....		1.20	10.00
18-24 inches, B & B.....	\$1.00	8.50	.....
2 -3 feet, B & B.....	1.25	10.00	.....

**NANDINA DOMESTICA (HEAVENLY BAMBOO)**—This is one of the best of all foundation plants. The leaves resemble maiden hair fern, and can be used for decoration in the house. The foliage is dense, and during all the winter months the plant is beautiful with great clusters of red berries. It is one of the healthiest of all shrubs. It will prosper in full sun or in partial shade, and it requires very little attention. No planting is complete without it.

	Each	10	100
4- 6 inches, S. T.....	\$ .75		\$ 6.00
6- 8 inches, S. T.....		.85	7.00
8-12 inches, S. T.....		1.25	10.00
18-24 inches, B & B.....	\$.60	5.00	.....
2- 3 feet, B & B.....	1.00	8.00	.....
3- 4 feet, B & B.....	1.50	12.50	.....

**OSMANTHUS FRAGRANS (SWEET OLIVE)**—A very beautiful shrub that should be in every garden. It is an evergreen with bright glossy thick foliage, and small white or yellow flowers that are extremely fragrant. Several of these plants will fill the air of the entire garden with a pleasing fragrance during the winter and spring. The plants require very little care, and are not subject to any injurious diseases.

	Each	10	100
6- 8 inches, C. T.....	\$1.00		\$ 8.00
8-12 inches, C. T.....		1.20	10.00
12-18 inches, C. T.....		1.50	12.00
18-24 inches, B & B.....	\$ .75	5.00	.....
2- 3 feet, B & B.....	1.00	8.50	.....

**PHOTINIA GLABRA**—A beautiful shrub that stands out in any garden. The new growth is a vivid red, while the older leaves are green.

When sheared this plant will put out an abundance of new red foliage which is most attractive.

	10	100
6- 8 inches, C. T.....	\$ .75	\$ 6.00
8-12 inches, C. T.....	1.00	8.00
12-18 inches, C. T.....	1.25	10.00

**PITTOSPORUM TOBIRA (JAPANESE PITTO-SPORUM)**—A hardy, wide spreading shrub. Dark green, glossy foliage, with small fragrant white flowers. Excellent for foundation plantings and hedges. It can be pruned to any shape desired. Does well either in full sun or in shade, and is very fine for seaside plantings.

**PITTOSPORUM TOBIRA VARIEGATA**—Same as above, except the leaves are variegated white and green. This makes an exceptionally showy plant.

	Each	10	100
6- 8 inches, C. T.....	\$ .60	\$ 5.00	
8-12 inches, C. T.....	.85	7.00	
12-18 inches, C. T.....	1.00	8.00	
18-24 inches, B & B.....	\$ .85	7.50	
2- 3 feet, B & B.....	1.00	9.00	

**PYRACANTHA FORMOSANA (FIRE THORN)**—The prettiest of all pyracantha. In the spring of the year the bush is covered with small lace-like flowers. In the early fall the berries start to show an orange color, and by winter the bush is a solid mass of brilliant red. This variety is not very hardy, and it is unsafe to plant it in cold climates.

**PYRACANTHA LALANDI**—An upright growing and hardy variety of pyracantha. It is covered with big bright orange colored berries throughout the fall and winter. A very popular variety.

	Each	10	100
6- 8 inches, C. T.....	\$ .75	\$ 6.00	
8-12 inches, C. T.....	1.00	8.00	
12-18 inches, C. T.....	1.20	10.00	
2- 3 feet, B & B.....	\$1.00	8.50	
3- 4 feet, B & B.....	1.50	12.50	

**ROSA ROULETTI**—A dwarf form of rose which does very well in the South. It has small rose-pink flowers, and makes an excellent border, pot or rock garden plant.

	100	
3-inch pot.....		\$10.00

**VIBURNUM MACROPHYLLUM**—A beautiful evergreen shrub with large green oblong leaves which turn to a beautiful red in the winter. The small white flowers are followed by red berries in clusters. Very hardy, and will grow in any kind of soil or location.

	Each	10	100
6- 8 inches, C. T.....	.....	\$ .85	\$ 7.00
8-12 inches, C. T.....	.....	1.10	9.00
18-24 inches, B & B.....	\$ .75	6.50	.....
2- 3 feet, B & B.....	1.00	8.00	.....
3- 4 feet, B & B.....	1.25	10.00	.....

## CONIFERS

**JUNIPERUS CONFERTA (SHORE JUNIPER)**—Spreading, prostrate juniper, with light green foliage, rather feathery. Will not turn brown in winter, and does well in sandy or clay soil.

	10	100
6- 8 inches, C. T.....	\$ .75	\$ 6.00
8-12 inches, C. T.....	1.00	8.00

**JUNIPERUS PFITZERIANA (PFITZER'S JUNIPER)**—This juniper forms a low flat wide-spreading irregular head, with bluish green foliage. It is one of the most beautiful conifers, highly resistant to drought and almost universally successful.

	Each	10	100
4- 6 inches, C. T.....	.....	\$ .75	\$ 6.00
6- 8 inches, C. T.....	.....	1.00	8.00
18-24 inches, field grown, B & B.....	\$1.00	.....	.....

**JUNIPERUS COMMUNIS (ENGLISH JUNIPER)**—This variety is a fast grower and forms a columnar conical shaped bush. It can be used as a hedge plant, or individual specimen. It does best when trimmed.

	Each	10	100
6- 8 inches, C. T.....	.....	\$ .75	\$ 6.00
8-12 inches, C. T.....	.....	1.00	8.00
2-3 feet, field grown, B&B	\$ .75	.....	.....
3-4 feet, field grown, B&B	1.00	.....	.....

**PODOCARPUS SINENSIS (SMALL LEAVED JAPANESE YEW)**—

**PODOCARPUS SINENSIS MACROPHYLLA (LARGE LEAVED JAPANESE YEW)**— Beautiful evergreen, upright, branching shrubs or small trees with rather broad leaves, light green when young, dark green when mature. Excellent

plants for hedges, screens, specimens, or for the shrubbery border.

	Each	10	100
6- 8 inches, C. T.....	\$ .75		\$ 6.00
8-12 inches, C. T.....	1.00		8.00
12-18 inches, C. T.....	1.50		12.00
18-24 inches, field grown, B & B.....	\$ .50		
2-3 feet, field grown, B&B	1.00		

**RETINISPORA ERICOIDES** — A fast growing beautiful conifer with thick, dark bluish green foliage. It is an upright grower that shears well and makes a very effective plant for landscape work.

	Each	10	100
6- 8 inches, C. T.....	\$ .60		\$ 5.00
8-12 inches, C. T.....	.80		6.00
12-18 inches, C. T.....	.90		7.00
3- 4 feet, B & B.....	\$ .75	6.00	
4- 5 feet, B & B.....	1.00	8.50	
5- 6 feet, B & B.....	1.25	10.00	

**RETINISPORA SQUARROSA VEITCHII** — A handsome rapid-growing variety with silver-blue foliage. It reaches a height of 15-20 feet, and shears well.

	Each	10	100
6- 8 inches, C. T.....	\$ .75		\$ 6.00
8-12 inches, C. T.....	1.00		8.00
18-24 inches, field grown, B & B.....	\$ .50		

**THUJA ORIENTALIS AUREA NANA** (BERCKMAN'S GOLDEN)—Dwarf golden arborvitae. Compact, rounded head, and handsome golden-green foliage.

	Each	10	100
4- 6 inches, C. T.....	\$ .75		\$ 5.00
6- 8 inches, C. T.....	1.00		7.00
8-12 inches, C. T.....	1.25		10.00
12-18 inches, field grown, B & B.....	\$ .50		
18-24 inches, field grown, B & B.....	.75		
24-30 inches, field grown, B & B.....	1.25		

**THUJA ORIENTALIS AUREA GLOBOSA**— A dwarf variety with a perfect globe shape and bright golden foliage at all seasons, which makes a most pleasing contrast when planted in front

of darker evergreens. Ideal for low hedges, or for tub or pot specimens.

	<b>Each</b>
8-12 inches, field grown, B & B.....	\$ .50
12-15 inches, field grown, B & B.....	.75
15-18 inches, field grown, B & B.....	1.00

**THUJA ORIENTALIS COLUMNALIS STRICTA**—A tall growing arborvitae of columnar shape. It has the same color as the Bakers, but is very slender and tall. A very unusual and beautiful bush.

	<b>Each</b>	<b>10</b>	<b>100</b>
6- 8 inches, C. T.....	\$ .75	\$ 6.00	
8-12 inches, C. T.....	1.00	8.00	
12-18 inches, C. T.....	1.25	10.00	
2-3 feet, field grown, B&B	\$.75		
3-4 feet, field grown, B&B	1.00		

## DECIDUOUS

**LAGERSTROEMIA INDICA (CRAPE MYRTLE)**—A popular and free-flowering tree, which produces blooms in great abundance throughout the summer. The flowers are beautifully fringed and are borne in large clusters. A massing of these, or a single specimen, makes a most striking effect. Commences to bloom in June and lasts throughout the summer. We have the watermelon red variety, which is the very best.

	<b>Each</b>	<b>10</b>	<b>100</b>
12-18 inches, Bare Root..	\$1.25	\$10.00	
18-24 inches, Bare Root..	1.50	12.00	
2-3 feet, Bare Root.....	1.75	15.00	
3-4 feet, Bare Root.....	\$.40	3.00	25.00
4-5 feet, Bare Root.....	.50	4.00	35.00

**SPIREA REEVESIANA (BRIDAL WREATH)**—A very handsome shrub with large pure white double flowers covering its slender arching branches. As it blooms just when the azaleas are at the height of their beauty, it makes a splendid combination with them. This is the best variety for this section of the country.

	<b>Each</b>	<b>10</b>
2-3 feet, bushy, B & B.....	\$ .50	\$3.50
3-4 feet, bushy, B & B.....	.75	5.00

## VINES, LEAVES, ETC.

**BOUGAINVILLEA (CRIMSON LAKE)** — The best bougainvillea. Very rich brilliant crimson color and a more profuse bloomer than any other variety. Florists grow it in pots for holiday trade, while in southern Florida and southern California it is raised outside as a climbing vine.

	<b>10</b>	<b>100</b>	
6-8 inches, 3-inch pot.....	\$1.00	\$ 7.00	

**RHYNCHOSPERMUM JASMINOIDES (STAR JASMINE)** — Evergreen, beautiful dark green leaves, with white star-shaped flowers that cover the vine and are very fragrant.

	<b>10</b>	<b>100</b>	
3-inch pots.....	\$1.80	\$15.00	

**ASPIDISTRA LURIDA** — Large dark green leaves. Excellent for planting in urns.

	<b>10</b>	<b>100</b>	
Price per good leaves.....	\$ .60	\$ 4.00	

**CORTADERIA ARGENTEA (PAMPAS GRASS)** — A grass that grows in handsome clumps 6-8 feet high. In the early fall it puts out a number of silvery plumes which last through the winter. Very ornamental for screens or as individual specimens.

	<b>10</b>	<b>100</b>	
Small division.....	\$ .75	\$ 6.00	
Medium division.....	1.25	10.00	