

Atlantic Coast

Camellias

JOURNAL OF THE ATLANTIC COAST CAMELLIA
SOCIETY



C. japonica Donckelarii

Antique (1834)

Photo by Nancy Smith

In This Issue

Recipe Corner	inside front cover
Atlantic Coast Camellia Society	
Officers	2
Directors	3
Past Presidents	4
President's Message	5
R. Glenn Capps	
Editor's Ramblin's	6
Richard Mims	
Membership Form	10
Camellia Misadventures: How Not to Display a Bloom	11
Bubba Hybrid, B.S., D.C.M.	
Roses and Camellias	15
Richard Mims	
Show Reports	
The Camellia and Garden Club of Tallahassee	17
Aiken Camellia Society	18
Coastal Carolina Camellia Society	19
Mid-Carolina Camellia Society	20
Sandhills Camellia Society	21
Northern Georgia Camellia Society	22
Tidewater Camellia Club	23
Middle Georgia Camellia Society	24
Fayetteville Camellia Club	25
Triangle Camellia Society	26
Charlotte Camellia Society	27
Virginia Camellia Society	28
Camellia Society of the Potomac Valley	inside back cover



(Show reports obtained from the American Camellia Society web page: <http://www.acs.org>)

Recipe Corner

By Mary K. Hall

Below is a favorite recipe I've been promising to run. I first encountered this dip at my school where we used to have monthly Birthday Celebrations. It has also become a favorite at the annual Mid-Carolina Camellia Society Picnic. Over the past few years, dad (Richard Mims) has also made this for numerous other occasions and usually calls me preceding each event to make sure he has it right.

Several years ago, dad's van and the dip had an unfortunate encounter on the way to the annual Mid-Carolina Camellia Society Spring Picnic. Somehow the dip "dipped" and spilled in the van and got into the carpet and seat space where his seats could be stored in the van. I don't know that he was ever able to get all the dip cleaned out. Perhaps the current owners of that van wonder about the orange stuff!

I normally double the recipe below and use my large crockpot/slow cooker my brother, Frank, so considerably gave me for a housewarming present a couple of years ago.

Original Recipe — Velveeta™ Salsa Dip

- 1 lb. lean hamburger meat
- 1 large "brick" Velveeta™ Cheese
- 1 large jar salsa

Mary Kay's Velveeta™ Salsa Dip

- 1 lb. Jimmy Dean™ Medium or Hot Sausage
- 1 large "brick" Velveeta™ Cheese
- 1 large jar Pace's™ Medium or Hot Chunky Salsa

For both recipes: brown the meat in a skillet. Cut the Velveeta™ bricks into 1/2" to 1" squares. Place all ingredients in the crockpot and turn on high. Stir periodically until all cheese is melted. Then turn the heat to low and serve with Tostitos, Fritos, or other corn chips until all gone! (and yes, it frequently is the first item to be gone.) I've tried making the dip with other brands of ingredients, but I've found the name brands listed combine together for the best tasting dip. If you need it milder, then use regular sausage and mild salsa...even more spicy?... Then use the Mexican Velveeta™ and add finely chopped jalapeños.

Atlantic Coast Camellia Society

Officers 2008-2009

PRESIDENT	Glenn Capps 334 Devane Street, Fayetteville, NC 28305 910 323-9891
1st VICE PRESIDENT	Mack McKinnon PO Box 91, Murrells Inlet, SC 29576 843 651-3363
2nd Vice President	Jim Dickson 1009 Stanton Drive, North Augusta, SC 29841 803 279-9451
SECRETARY	Christine Smith 823 Castle Avenue, Charleston, SC 29407 843 367-9596
TREASURER	Bonnie Serpas 229 Green Street, Santee, SC 29142 803 854-3171
HISTORIAN	Cheryl Thompson 602 Forest Drive, Ft. Valley, GA 31030-3612 478 825-2559
EDITOR	Richard Mims 409 Groves Street, Lugoff, SC 29078 803 438-9741
Assistant Editor	Mary K. Hall 8 Jersey Court, Elgin, SC 29045 803 233-9515
WEBMASTER	Miles Beach 262 Alexandra Drive, Mt. Pleasant, SC 29464 843 881-6420 mrcamellia@comcast.net
ACCS website: http://www.atlanticcoastcamelliasociety.com	

Directors

Chuck & Bev Ritter
202 Mason Road
Melrose, FL 32666
352 475-3341

Wilbur Rumph
P.O. Box 273
Marshallville, GA 31057
478 967-2308

Ronald Wolfe
3019 Old Dominion Drive
Albany, GA 31721
229 883-2349

Marie Mizell
929 Elmeer Avenue
Metairie, LA 70005
504 833-3970

Jim Smelley (Director at Large)
4831 Devon Street
Moss Point, MS 39563-2410
228 475-9736

Betty Gail Buggeln
1719 Verrazzano Drive
Wilmington, NC 28405-4227
910 509-1792

Lou Bryant
504 Francisca Lane
Cary, NC 27511-3746
919 467-6876

Geary Serpas
229 Green Street
Santee, SC 29412
803 364-8219

Tony Smith
823 Castle Avenue
Charleston, SC 29407
843 364-8219

Lawrence Barlow
3591 Kentucky Trail
Chesapeake, VA 23323
757 487-6082

Atlantic Coast Camellia Society Past Presidents

Hulyn Smith	1980-1982
Annabelle Fetterman	1983-1984
Elliott P. Brogden (deceased)	1985-1986
Richard Waltz	1987-1988
Leslie Cawthon (deceased)	1989-1990
Marion Edwards (deceased)	1991-1992
Mildred Robertson	1993-1994
Ed Powers	1995-1996
Bill Hardwick	1997-1998
Jeanette Waltz	1999-2000
Geary Serpas	2001-2002
Bob Reese	2003-2004
W. Lee Poe	2005-2006
John Newsome	2007-2008

Information Wanted!

We are compiling current information on active Camellia Clubs and Societies and their Shows. Please send the following information to Richard Mims, 409 Groves St., Lugoff, SC 29078

**Club or Society Name
Current President and Secretary
Contact address
Monthly meeting information (where, when, etc.)
Next Show Date(s)
Show Chairman and contact information**

Thank you!!!

President's Message

by R. Glenn Capps



The winter this year was unusual in most of the Atlantic Coast States in that there were not prolonged periods of freezing weather. The nights were very cold but most daytime temperatures were above freezing. Only one show (in Georgia) that I know of had to be cancelled because of cold damage. The spring is starting out with adequate rainfall to support excellent camellia growth. We hope that the drought years are in the past and we have adequate water in places such as Atlanta to support our camellia hobby.

When you receive this letter it will be around the time of the annual Atlantic Coast Camellia Society board meeting. Again this year, we are meeting at the home of Pete

and Donna Denton in Columbia, South Carolina at the annual picnic held by the Mid-Carolina Camellia Society. Among other things, at this meeting we will renew our invitation to the American Camellia society to hold its Board Meeting at Magnolia Gardens and enjoy the annual ACCS Convention with us.

Magnolia Gardens will again host our annual and only meeting in September. Please make time to attend and enjoy the outing and educational programs with your fellow members. Remember, a big part of our group is fellowship with like-minded camellia people. I want to meet all our members in Charleston at the 2009 Convention.

Editor's Ramblin's

By Richard Mims

Camellia Shows get others interested in the flower we support and provide us an outlet to show thousands of people the beautiful flowers we grow—something we cannot do with a tour of our yard or greenhouse. Hosting great camellia shows is a good fit with purposes of most of our camellia societies, both local and national, to encourage the use of camellias in our landscapes and promote the societies themselves whose goals are to further research on diseases, propagation, and other facets of camellia growing. Shows, coupled with meetings, conventions with sales and auctions, and publications with interesting stories and photographs are what we need to get members to furnish financial support, provide a larger selection of good articles for publications, afford more research manpower; and, overall, to get new people with new ideas for furthering the organizations which promote the Camellia.

Being familiar with camel-

lia shows held since 1958, I'm going to try to cover a little about show categories and show awards in the past, where we are now, and suggestions as to what I think the future should hold. In the early days most awards were silver—a sprinkling of sterling awarded to the best flowers—but mostly silver plate. Many awards were sponsored by local businesses including banks. Although fewer prizes were awarded, silver with camellias made a spectacular display and I think enticed growers to enter camellia shows. Prizes awarded for best in show, blooms over five inches and for blooms under five inches, trays and sweepstakes were the rule with other categories added as time passed—best white, reticulata, non reticulata hybrid and miniature, formal double, and best local. Most early shows had a special section for and also gave several awards to Sasanqua growers, many of whom dropped out of camellia organizations when

this was discontinued.

As men's clubs became clubs for men and women awards started being given for all size categories. (Women were nationally accredited judges but could not join many of the local camellia societies.) The men always wanted the biggest bloom (usually red) to be the best bloom in show; whereas, the women were more partial to the beauty of the smaller flowers. Many men said women only wanted to vote for the "pretty pink flower." Please know that I, personally, would NEVER have said that.) To assure that huge flower got to the head table, awards had to be given to the other blooms because smaller flowers would sometimes "sneak" up and get the most votes (hurrah! for the vote of the ladies.). I think best white was added because judges were reluctant to put the white up as best flower by deliberately voting for color. When silver became very expensive, clubs put about the same money into crystal awards just as beautiful but more difficult to handle and more expensive to mail. (I think the last nine

words in the last sentence is leading to the demise of awarding of trophies.)

There was much controversy when giberelic acid was put into use for getting larger, earlier blooms. Most shows separated not gibered blooms and gibered blooms. This caused huge headaches and probably caused many show chairpersons to pull out their hair. (That could account for the bald people we see exhibiting camellias.) Until ACS stepped in and made a rule that a show must accept gibered flowers, a few clubs refused to put gibered flowers in competition at all. At the present time, most of the clubs do not separate gibered and not gibered flowers. Giberelic acid is treated as just another type of fertilizer and can be in the hands of any grower to use at will.

The future: Greenhouse growing should be encouraged. As evident this year, many shows are greatly improved because greenhouse flowers were available after severely cold weather damaged most outside blooms. Without greenhouse blooms numerous varieties would be

missed and many reticulata and reticulata hybrid varieties would not be available (seen) at all. To encourage greenhouse and outside growing, an equal number of camellia blooms should be recognized from each group. All flowers that are eligible for American Camellia Society Awards grown protected and unprotected, gibed or not gibed, should receive that certificate whether or not a society wants to award a tangible trophy. I think I can speak for most of us in saying that a trophy is of secondary importance to the camellia variety being recognized by ACS and becoming part of the winning statistics. I would be in favor of supporting new shows put on by new clubs who only awarded all ACS certificates and not other trophies for their first three years. By doing this trophy money would be saved to get the new clubs going.

As with everything these days, we prefer the easy way out. Money has become the preferred award mostly because money can be distributed more easily than tangible trophies such as crystal and silver. This does little to en-

courage new show people. It usually costs a couple hundred dollars to go to a show out of town. When I tell my friends I drove to far away places in the southeast to win \$20 or \$50 they give me that "are you crazy?" look. When I show them the beautiful silver and crystal I have won that is on display in my home, it makes them envious and perhaps will encourage them to exhibit camellias also. I really cannot tell you what I have done with the money won. It probably was spent for something to eat along the way. An award of something pretty and ACS Certificates always made for a better homecoming. I could say, "I won a beautiful bowl for Best Miniature" or "I won some beautiful napkins with an embroidered camellia for my reticulata." For some reason saying, "I won \$50" doesn't sound as exciting. If the award my bloom won was a duplicate or something I couldn't use, I could always recycle it at our in-house shows, give it to a beginning club with little money for trophies or use it for a gift.

To sum it up, I think it is

time to revisit what we do at camellia shows: Among other things, give awards that would cause new people to want to enter flowers, awards that winners can show families and friends, recognize every flower eligible for an ACS or local award with appropriate certificates whether or not another "award" is available. Treat unprotected and protected flowers the same.

Encourage members to endow trophies and local clubs to honor themselves, their firm, friends or family members. I think many clubs would change their names to the "John or Jane Doe Camellia Club" for a gift of \$25,000 from which interest could be used for show and club support.



C. japonica Magnoliaflora
Antique (1886)

Join NOW!

(Membership is a great gift for friends and family!!!)

The Atlantic Coast Camellia Society

We are a society that wants more members to help us promote the science of Camellia culture by exchanging knowledge and ideas with Camellia specialists, provide information about shows and social events and join us at our annual meeting in September or October each year. Annual dues are \$12.50 per year for singles or couples. A membership entitles you to a journal published in January, May, and September. To join, send your check and personal information for receiving communications and journals to:

**ACCS
Bonnie Serpas
229 Green Street
Santee, SC 29142**

Membership Form

**ACCS Dues 9/1/08-8/31/09 Single or Double \$12.50
 9/1/09-8/31/10
(Circle one of the above)**

Name(s): _____

Address: _____

City, State, Zip: _____

Telephone Number (include Area Code): _____

E-Mail: _____

Camellia Misadventures: How Not To Display a Bloom

Bubba Hybrid, B.S., D.C.M.

There are so many things that affect a Camellia Show; yet every show I attend is always a treat. Sure there are some shows that have more blooms than others, and other shows where a sudden freeze damages the outdoor blooms. There is never a show, however, that does not have some gorgeous blooms that make you want find that plant to add to your yard or greenhouse.

I am not going to list those blooms you see at a show, drool over and wish you had, because we all have our own list. Rather, I am going to show you some blooms displayed at Camellia shows which made

me cringe—and it wasn't always the fault of the bloom.

The first class of problems I call, "Any size cup will do." At the entry area of a show there are multiple sizes of cups to accommodate multiple sizes of blooms. Get the right size cup for the bloom you have. Figures 1 and 2 show the bloom sinking into a cup that is too large. If you are unable to find a cup that will support your bloom then use a collar beneath the bloom to support it (this is legal). A bloom that has fallen down inside the cup will have no chance when the judging begins.



Fig. 1

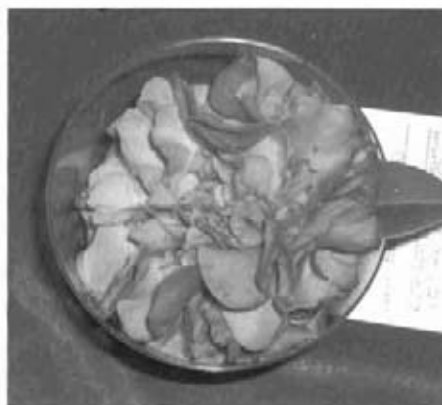


Fig. 2



Fig. 3



Fig. 4

The next class of problems I call, "This is how long the stem was when I took it out of the box." Figures 3 and 4 show blooms supported by stems which are much too long; rules state that stems should be no longer than two inches. If the stem is too long, shorten it. The bloom should rest on and be supported by the cup, or just large enough to provide support and keep it from sinking into the cup, and the cup should not be visible. It is not always possible when you cut the bloom from the plant to know what size cup the bloom will be placed in, so when you have to use a smaller cup shorten the stem. This will also reduce the chance of your bloom tipping over because it is top heavy. I guess some folks think that a long stem makes the bloom "jump out at the judges."

The third problem is, "I

think my bloom looks better with more foliage." In Figures 5 and 6 are blooms displayed with three leaves. Every Show Prospectus I have seen says "no more than two leaves" then I can't for the life of me figure why some blooms are displayed with three or more leaves.

A related matter is that the leaves should be upright. Figure 7 shows the upside down leaf, and also in Figure 1 the leaf would also be upside down if the bloom were supported properly. No prospectus says the leaves have to be attached to the stem, so better to detach the leaves and place them beneath the bloom "shiny side up." Some exhibitors punch holes and insert stems through leaves so they may rotate each leaf to a position that will enhance the beauty of the bloom.



Fig. 5



Fig. 6

The last problem I want to mention is, "There is only a little damage on my bloom." All of us who grow Camellias outdoors know that our blooms are subject to damage if there is a freeze, and in spite of our best efforts some of our blooms may show some slight damage. Although altering blooms is against rules, minor things are done by many exhibitors...such as removing a few black stamens among golden ones or

pulling out a discolored petaloid, or trimming a small bad spot with wet scissors. Show sponsors are also aware of this and at times the judges are reminded that some lenience is needed in judging blooms grown outdoors. Figures 8 and 9 show degrees of bloom damage that should not be on display at a Camellia Show. This damage did not occur after the bloom was entered in the show. It existed at the time of entry. These blooms should have been rejected by the Show Chairman and many times are. When you are a new participant in Camellia shows and have only a few blooms to show it is hard to discard a bloom because of some damage. But we still need to avoid a bloom with serious damage.

Is there a lesson here? To me the lesson is that if your Camellia Club is going to



Fig. 7

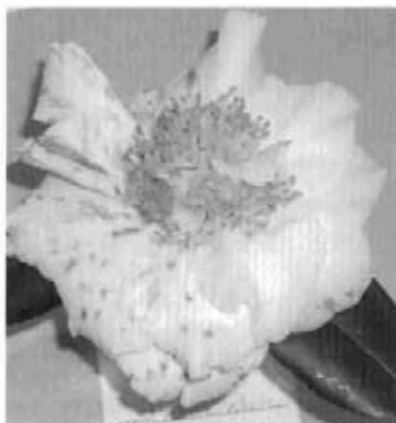


Fig. 9

sponsor a Camellia Show, then as Club members you need to assist new Club members and members of the public while they are entering their blooms. One or more Club members need to be in the entry area for this purpose. Also programs at club meetings on bloom entry would be helpful. The Show Prospectus needs to be given to everyone who brings blooms to a show for the exhibitor to have the rules readily available.

In closing I wish I could tell you that all of the pictures shown here were faked, but on the contrary they were all pictures taken at Camellia shows that I have attended. In addition, they were all taken within 30 minutes after the judging of the show was completed. An

Fig. 8



accredited judge is not supposed to touch a flower after it is entered and cannot remove blooms from the show. Every Camellia Club I know needs and wants new members, but while we are encouraging them let's also do our job and make sure they have the advantage of our expertise.

Blooms Away,
Dr. Bubba

Roses and Camellias

By Richard Mims

In February, Rebecca Bull Reed, Associate Garden Editor, *Southern Living* Magazine, came to South Carolina to photograph for an article she is writing called "The Big Fat Southern Camelia." Look for this article in *Southern Living* early in 2010.

She and her team made photographs of the beautiful camellias at the home of Johnnie and Susan Walker and at the Oaks Plantation (Parker Conner's planting) on Edisto Island. The present owner, Nancy Lipham, who hit a deer the night before, was there to greet us and show us around in and out of that magnificent home built in 1838. Those that were at the Columbia spring show met Rebecca and just might see yourself or your bloom pictured in *Southern Living*.

To get on with the story, Rebecca probably wanted to witness a little angst or jealousy when she asked me whether or not camellia and rose people get along. THIS

camellia person loves the shrub that has year-round beauty and the most perfect flowers but he also grows a few roses to have a summer flower or two for the house that also has great fragrance and might camouflage his odor after working amongst the camellias.

At the moment of the question I could only think about one amusing incident which causes me to laugh inwardly each year when I see the rose people at the fair. For over 30 years camellia people had staged a fall camellia show on the first weekend at the State fair and the rose people wanting this date also, stuck their roses in nooks and crannies surrounding the beautiful camellia specimens. (Columbia solved a conflict with the Georgia National Fair beginning this past year by now holding its show on the second week of the South Carolina State Fair; hence, also solving the conflict with the rose people.) We all

would be using at the same time the work-room to get out rose and camellia exhibits. I admired the deftness exhibited by a lady "primping" her old rose and imagined that a person who gave a flower such rapt attention would make a good camellia club member. I thought it might be the friendly thing to do to start a conversation. I said, "You ladies are doing such a great job entering your old roses that I hope you are also interested in camellias." A rose lady snapped back, "I have three camellia bushes in my yard and when I get back

home, I'm going to pull up all three and throw them in the trash." Although I had been told of these hidden feelings, it was only after that remark that I fully realized how jealous rose people are of camellia people. (In reality, she was probably just jealous that the space in the building featured camellias rather than roses.)

I cannot think of anything a rose person might have that a camellia person would be jealous of—except—the most beautiful blooming flower in summer with enviable fragrances which few flowers will ever equal.



C. japonica Rosea Superba Var.
Antique (1890)

The Camellia and Garden Club of Tallahassee

January 10 - 11, 2009, Tallahassee, Florida

Show Chairman - Stewart Tomlinson

1530 Blooms Displayed, 500 Attendees, 50 Exhibitors

Gold Certificate (open):		Cheng Lee
Silver Certificate (open):		Howard/Mary Rhodes
Gold Certificate (protected):		Randolph Maphis
Silver Certificate (protected):		Richard/Katherine Mims
Best Bloom Open:	<i>Frank Houser</i>	Esther Lawrence
Best Bloom Prot.:	<i>Linda Carol</i>	Randolph Maphis
Best Kay Berridge	<i>Kay Berridge</i>	Donna/Charles Nichols
C. japonica open:		
Lg/VLg:	<i>Veiled Beauty</i>	Charles Watford
Md:	<i>Elaine's Betty Red</i>	Cheng Lee
Sm:	<i>Red Hots</i>	Donna/Charles Nichols
C. japonica treated protected:		
Lg/VLg:	<i>Georgia National Fair</i>	Howard/ Mary Rhodes
Md:	<i>White Velvet</i>	Richard/ Katherine Mims
Sm:	<i>Black Gold</i>	Steve/Gayle Lawrence
C. reticulata (Inc. hybrids w/retic parent) open:		
VLg:	<i>Frank Houser Var.</i>	Cheng Lee
Lg:	<i>Valentine Day Var.</i>	Howard/Mary Rhodes
Md:	<i>Black Lace Peony Var.</i>	Donna/Charles Nichols
C. reticulata (Inc. hybrids w/retic parent) protected:		
VLg:	<i>Frank Houser</i>	Howard/Mary Rhodes
Lg:	<i>Bill Goertz Var.</i>	Howard/Mary Rhodes
Md:	<i>Elizabeth B. Hunt</i>	Steve/Gayle Lawrence
C. hybrid (w/no retic parent) open:		
Lg:	<i>Mona Jury</i>	Cheng Lee
Md:	<i>Julie</i>	Charles Watford
Sm:	<i>Spring Daze</i>	Howard/Mary Rhodes
C. hybrid (w/no retic parent) protected:		
Lg:	<i>Elsie Jury</i>	Randolph Maphis
Md:	<i>Julie Var.</i>	Steve/Gayle Lawrence
Sm:	<i>Buttons n Bows</i>	Richard/Katherine Mims
Best Miniature open:	<i>Little Slam Pink</i>	Donna/Charles Nichols
Best Miniature protected:	<i>Bonbon</i>	Steve/Gayle Lawrence
Best White Bloom open:	<i>Swan Lake</i>	Esther Lawrence
Best White Bloom protected:	<i>Sea Foam</i>	Howard/Mary Rhodes
Tray of Three, same variety, open:		
	<i>Grand Marshall</i>	Esther Lawrence
Tray of Three, same variety, protected:		
	<i>Frank Houser</i>	Mickey/Mary Moore
Tray of Five, different varieties, open:		Cheng Lee
Tray of Five, different varieties, protected:		Randolph Maphis

C. sansaqua (& related species) open or protected:

	<i>Star Above Star</i>	Linda Nichols
Best Seedling Bloom:	<i>H.S. #30</i>	Randolph Maphis
Best Mutant Bloom:	<i>Elizabeth Dowd</i>	John Newsome
Novice Category		
Best Red Bloom:	<i>Roberta Hardison</i>	Sherry Richbourg
Best White Bloom:	<i>Han-Ling Snow</i>	Ben Taylor
Best Variegated Bloom:	<i>C.M. Hovey Var.</i>	Peggy Coppins

Aiken Camellia Society

January 17-18, 2009, Aiken, South Carolina,

Show Chairpersons - Lee Poe & Jim Dickson

1126 Blooms Displayed, 5 New ACS Members

Gold Certificate (open):	Johnnie Walker
Silver Certificate (open):	Ed/Lou Powers
Gold Certificate (protected):	Julia Leisenring
Silver Certificate (protected):	Annabelle/Lew Fetterman
Best Bloom in Show - Tom and Dottie Evans Award:	

Linda Carol Buck/Tyler Mizzell

C. japonica open: Lg/VLg - Jim Stutts Award:

	<i>Lauren Tudor</i>	Geary/Bonnie Serpas
Md:	<i>Elaine's Betty Pink, Var.</i>	Johnnie Walker
Sm:	<i>Little Babe, Var.</i>	Geary/Bonnie Serpas

C. japonica protected: Lg/VLg - Paul and Marie Dahlen Award:

	<i>Tomorrow Park Hill</i>	Buck/Tyler Mizzell
Md:	<i>Midnight Magic</i>	Buck/Tyler Mizzell
Sm:	<i>Purple Swirl</i>	Julia Leisenring
Best japonica, White:	<i>Sea Foam</i>	Annabelle/Lew Fetterman

C. reticulata (Inc. hybrids w/retic parent):

Best:	<i>Valentine's Day, Var.</i>	Buck/Tyler Mizzell
RU:	<i>Jim Pinkerton</i>	Richard/Katherine Mims

C. hybrid (w/no retic parent):

Best:	<i>Julia</i>	Geary/Bonnie Serpas
RU:	<i>Freedom Bell</i>	Annabelle/Lew Fetterman
Best Miniature open:	<i>Little Too</i>	Johnnie Walker

Best Miniature protected:

Little Slam, Var. Julia Leisenring

Tray of Three, same variety:

Frank Houser, Var. Buck/Tyler Mizzell

Tray of Five, different varieties:

Buck/Tyler Mizzell

Best Seedling: Mack McKinnon

Best Antique Bloom - Pre-1900 - protected or unprotected:

Pink Perfection Geary/Bonnie Serpas

Best Bloom by Novice Exhibitor, grown unprotected:

Pink Perfection Jed Anderson

Coastal Carolina Camellia Society

January 24, 2009

Show Chairman - Tony Smith

601 Blooms Displayed, 1000 Attendees, 36 Exhibitors,

6 New ACS Memberships

Gold Certificate (open):	Johnnie Walker
Silver Certificate (open):	Bob/Gail Reese
Gold Certificate (protected):	Buck/Tyler Mizell
Silver Certificate (protected):	Julia Leisenring
Magnolia Award (Best in Show):	
<i>Les Jury</i>	James/Carolyn Dickson

C. japonica open:

Lg/VLg:	<i>Pirate's Gold Var.</i>	Johnnie Walker
Md:	<i>Dixie Knight Supreme</i>	Bob/Gail Reese
Sm:	<i>Red Hots</i>	Bob/Jean Williams

C. japonica protected:

Lg/VLg:	<i>Royal Velvet Var.</i>	Nancy Ballew
Md:	<i>Sea Foam</i>	Buck/Tyler Mizell
Sm:	<i>Tammia</i>	Mack McKinnon

C. reticulata (Inc. hybrids w/retic parent) open:

<i>Dr. Clifford Parks</i>	Bob/Gail Reese
---------------------------	----------------

C. reticulata (Inc. hybrids w/retic parent) protected:

<i>Graem Yates Var.</i>	Buck/Tyler Mizell
-------------------------	-------------------

C. hybrid (w/no retic parent) open: *Punkin*

	Bob/Gail Reese
--	----------------

C. hybrid (w/no retic parent) protected:

<i>Julia Buck</i>	Tyler Mizell
-------------------	--------------

Best Min. open: *Little Slam Pink*

	Miles/Brenda Beach
--	--------------------

Best Min. prot.: *Little Slam Var.*

	Julia Leisenring
--	------------------

Best Formal Double: *Harriett Bisbee*

	Buck/Tyler Mizell
--	-------------------

Best White Bloom open: *Man Size*

	Johnnie Walker
--	----------------

Best White Bloom prot.: *Melissa Anne*

	Buck/Tyler Mizell
--	-------------------

Best Seedling: *Sweetie Pie Sport*

	Hulyn Smith
--	-------------

Best Species: *Chrysantha*

	Nancy Ballew
--	--------------

Best Pre-1900 Bloom: *Lady Humes Blush*

	Julia Leisenring
--	------------------

Best Miss Charleston open:

<i>Miss Charleston Var.</i>	Geary/Bonnie Serpas
-----------------------------	---------------------

Best Miss Charleston prot.:

<i>Miss Charleston Var.</i>	Buck/Tyler Mizell
-----------------------------	-------------------

Best Novice Bloom: *Dr. Clifford Parks*

	Bill/Sally Courtney
--	---------------------

LOCAL AWARDS

Best Bloom: Lg: *Mrs. R. L. Wheeler*

	Bob/Jerry Weise
--	-----------------

Best Bloom: Md: *Sawada's Mahogany*

	Wesley/Martha Fisher
--	----------------------

Best Bloom: Sm: *Buddy*

	Wesley/Martha Fisher
--	----------------------

Mid-Carolina Camellia Society

February 14, 2009, Columbia, SC

Show Chairperson - Richard Mims

1218 Blooms Exhibited, 1500 Attendees, 41 Exhibitors,

1 New ACS Membership

Gold Certificate (open):		Johnnie Walker
Silver Certificate (open):		Miles/Brenda Beach
Gold Certificate (protected):		Annabelle/Lew Fetterman
Silver Certificate (protected):		Buck/Tyler Mizzell
Best Bloom Unprotected or Protected – Jim Pinkerton		
Memorial Trophy:	<i>Frank Houser Var.</i>	Johnnie Walker
C. japonica open:		
Lg/VLg:	<i>Miss Charleston Var.</i>	Geary/Bonnie Serpas
Md:	<i>Sea Foam</i>	Johnnie Walker
Mn/Sm:	<i>Red Hots</i>	Johnnie Walker
Best White Bloom open:	<i>Han Ling Snow</i>	Johnnie Walker
C. japonica protected:		
Lg/VLg:	<i>Pirate's Gold Var.</i>	Buck/Tyler Mizzell
Md:	<i>Black Magic</i>	Annabelle/Lew Fetterman
Mn/Sm:	<i>Peggy's Blush</i>	Annabelle/Lew Fetterman
Best White Bloom protected:	<i>Sea Foam</i>	Buck/Tyler Mizzell
C. reticulata (Inc. hybrids w/retic parent):		
Best Valentine Day Unprotected or Protected - Tom & Charlotte Knox		
Memorial Trophy:		Johnnie Walker
C. reticulata (Inc. hybrids w/retic parent) open:		
Lg/VLg:	<i>Dr. Clifford Parks</i>	Johnnie Walker
C. reticulata (Inc. hybrids w/retic parent) protected:		
Lg/VLg:	<i>Hall's Pride</i>	Julia Leisenring
Sm/Md:	<i>Betty Ridley</i>	Annabelle/Lew Fetterman
C. hybrid (w/no retic parent) open:		
Best:	<i>Rose Bouquet</i>	Bob/Gail Reese
C. hybrid (w/no retic parent) protected:		
Best:	<i>Mona Jury</i>	Buck/Tyler Mizzell
Best Miniature open: Elliott Brogden Memorial:		
	<i>Fircone</i>	Miles/Brenda Beach
Best Miniature protected:	Helen B.	Annabelle/Lew Fetterman
Best Formal Double open/protected - Dr. Herbert Racoff/		
Frances Shannon Racoff Memorial Trophy:		
	<i>Nuccio's Bella Rossa</i>	Johnnie Walker
Best Novice Bloom open:		
	<i>Adolphe Audusson</i>	Cary/Mary Gail Chamblee
Best Seedling:		Miles/Brenda Beach
Best Mutant Bloom:		Nancy Ballew
Best Antique Bloom:	<i>Magnoliaeflora</i>	Bob/Jean Williams
Tray of Three, same variety open:		

	<i>Little Babe Var.</i>	Richard/Betty Gail Buggeln
Tray of Three, same variety protected:		
	<i>Sea Foam</i>	Buck/Tyler Mizzell
Tray of Five, different varieties open:		Johnnie Walker
Tray of Five, different varieties protected:		Buck/Tyler Mizzell
Tray of Three, same or different varieties (Reticulata), open:		
	<i>Frank Houser Var.</i>	Geary/Bonnie Serpas
Tray of Three, same or different varieties (Reticulata), protected:		
	<i>Frank Houser Var.</i>	Buck/Tyler Mizzell
LOCAL AWARDS - Blooms Grown in Midland South Carolina Counties		
Best Bloom in Show—Richard and Katherine Mims Trophy:		
	<i>Donckelarii</i>	Lawanda Brogdon
Lg:	<i>Royal Velvet</i>	Bill/Joyce Supplee
Md:	<i>Ville de Nantes</i>	Nancy Doolittle
Sm:	<i>Maroon and Gold</i>	Peggy Camp

Sandhills Camellia Society

February 21, 2009, Pinehurst, NC

Show Chairman - Jane Waldemar

495 Blooms Displayed, 400 Attendees, 15 Exhibitors,

11 New ACS Members

Gold Certificate:		Annabelle/Lew Fetterman
Silver Certificate:		Bill/Molly Howell
<i>C. japonica</i> open:		
Lg:	<i>Miss Charleston Var.</i>	Geary/Bonnie Serpas
RU:	<i>Drama Girl Var.</i>	Tony/Christine Smith
Md:	<i>Grand Marshall Var.</i>	Geary/Bonnie Serpas
RU:	<i>Grand Marshall</i>	Geary/Bonnie Serpas
Sm:	<i>Black Tie</i>	Doug/Sally Simon
RU:	<i>Pink Perfection</i>	Geary/Bonnie Serpas
<i>C. japonica</i> protected:		
Lg:	<i>Tomorrow Park Hill</i>	Buck/Tyler Mizzell
RU:	<i>Frances Eugene Phillips</i>	Buck/Tyler Mizzell
Md:	<i>Midnight Magic</i>	Buck/Tyler Mizzell
RU:	<i>Margaret Davis</i>	Buck/Tyler Mizzell
Sm:	<i>Little Babe Var.</i>	Annabelle/Lew Fetterman
RU:	<i>Peggy's Blush</i>	Annabelle/Lew Fetterman
Best Miniature, unprotected or unprotected:		
Best:	<i>Sweet Jane</i>	Tony/Christine Smith
RU:	<i>Man Size</i>	Tony/Christine Smith
<i>C. reticulata</i> (Inc. hybrids w/retic parent) open:		
Best:	<i>Frank Houser</i>	Geary/Bonnie Serpas
RU:	<i>Frank Houser Var.</i>	Geary/Bonnie Serpas
<i>C. reticulata</i> (Inc. hybrids w/retic parent) protected:		
Best:	<i>Linda Carol</i>	Buck/Tyler Mizzell

RU:	<i>Frank Houser</i>	Annabelle/Lew Fetterman
C. hybrid (w/no retic parent) open:		
Best:	<i>Charlean</i>	Tony/Christine Smith
RU:	<i>Freedom Bell</i>	Doug/Sally Simon
C. hybrid (w/no retic parent) protected:		
Best:	<i>Tom Perkins</i>	Annabelle/Lew Fetterman
RU:	<i>Mona Jury Var.</i>	Buck/Tyler Mizzell
Best Seedling:		
Best:	<i>Japonica-TWG #115</i>	Dr. T. Winston Gouldin
RU:	<i>Japonica-TWG #115</i>	Dr. T. Winston Gouldin

Northern Georgia Camellia Society

February 21 - 22, 2009

Atlanta, GA

Show Chairman - John Newsome

763 Blooms Exhibited, 1200 Attendees, 4 New ACS Memberships

Gold Certificate (open):		Chuck/Bev Ritter
Silver Certificate (open):		Miles/Brenda Beach
Gold Certificate (protected):		John Newsome
Silver Certificate (protected):		James/Elaine Smelley
Best Bloom in Show:	<i>Hall's Pride Var.</i>	Julia Leisenring
C. japonica open:		
Lg:	<i>Dick Hardison</i>	Chuck/Bev Ritter
Md:	<i>Black Magic</i>	Esther Lawrence
Sm:	<i>Grace Albritton</i>	John Gamble
C. japonica protected:		
VLg:	<i>Tomorrow Park Hill</i>	Frank Jamison
Lg:	<i>Elizabeth Weaver Var.</i>	John Newsome
Md:	<i>Midnight Magic Var.</i>	James/Elaine Smelley
Sm:	<i>Maroon and Gold</i>	Steve/Gayle Lawrence
Best Miniature open:	<i>Sweet Jane</i>	Chuck/Bev Ritter
Best Miniature protected:	<i>Man Size</i>	John Newsome
C. reticulata (Inc. hybrids w/retic parent) open:		
	<i>Jack Mandarin</i>	Chuck/Bev Ritter
C. reticulata (Inc. hybrids w/retic parent) protected:		
Best:	<i>Valentine Day</i>	Howard/Mary Rhodes
C. hybrid (w/no retic parent) open:		
	<i>Charlean</i>	Miles/Brenda Beach
C. hybrid (w/no retic parent) protected:		
	<i>Spring Daze</i>	Steve/Gayle Lawrence
Best White Bloom:	<i>Angela Lansbury</i>	Clayton/Nedra Mathis
Best Novice Bloom:	<i>Nuccio's Bella Rossa</i>	Denise Caffrey
LOCAL - Metro Area C. japonica open:		
Best:	<i>Ville de Nantes</i>	Bonnie Supplee
RU:	<i>Don Mac</i>	Henry Wyche

Tidewater Camellia Club

February 28, 2009

Wilmington, NC

Show Chairpersons - Matt Hunter & Diane Clark

1043 Blooms Displayed, 724 Attendees, 24 Exhibitors,

4 New ACS Memberships

Gold Certificate (open):	Johnnie/Susan Walker
Silver Certificate (open):	Ed/Lou Powers
Gold Certificate (protected):	Lew/Annebelle Fetterman
Silver Certificate (protected):	Buck/Tyler Mizzell

C. japonica open:

Lg/VLg:	<i>Apollo 14</i>	Johnnie/Susan Walker
Md:	<i>Dixie Knight Supreme</i>	Geary/Bonnie Serpas
Sm:	<i>Something Beautiful</i>	Johnnie/Susan Walker

C. japonica protected:

Lg/VLg:	<i>Wendy</i>	Lew/Annebelle Fetterman
Md:	<i>Ville de Nantes</i>	Buck/Tyler Mizzell
Sm:	<i>Tammia</i>	Ann/Mack McKinnon
Best Miniature open:	<i>Lilemac</i>	Johnnie/Susan Walker
Best Miniature protected:	<i>Man Size</i>	Bob/Sandy Black

C. reticulata (Inc. hybrids w/retic parent) open:

<i>Valentine Day</i>	Geary/Bonnie Serpas
----------------------	---------------------

C. reticulata (Inc. hybrids w/retic parent) protected:

<i>Valentine Day Var.</i>	Buck/Tyler Mizzell
---------------------------	--------------------

<i>C. hybrid</i> (w/no retic parent) open: <i>Debbie</i>	Bob/Jean Williams
--	-------------------

C. hybrid (w/no retic parent) protected:

<i>Adorable</i>	Lew/Annebelle Fetterman
<i>Al Ewan</i>	Robert L. Williams

Best Seedling:

Best Novice Bloom - Presidents' Awards:

Lg/VLg - Ed Powers Award: <i>Christmas Beauty</i>	Marianne Grant
---	----------------

Sm - Les Marbury Award: <i>Pink Perfection</i>	Marianne Grant
--	----------------

Tray of Three, same variety, open: <i>Black Tie</i>	Doug/Sally Simon
---	------------------

Tray of Three, same variety, protected:

<i>Lauren Tudor</i>	Buck/Tyler Mizzell
---------------------	--------------------

Tray of Five, different varieties, open:	Bill/Molly Howell
--	-------------------

Tray of Five, different varieties, protected:	Buck/Tyler Mizzell
---	--------------------

Best White Bloom open: <i>Charlie Bettes</i>	Johnnie/Susan Walker
--	----------------------

Best White Bloom protected: <i>Melissa Anne</i>	Buck/Tyler Mizzell
---	--------------------

LOCAL AWARDS

Henry Rehder Founder's Award — Member of Tidewater Camellia Club

Best: <i>Betty Sheffield Pink Var.</i>	Alma Buffkin
--	--------------

RU: <i>Lady Clare</i>	Alma Buffkin
-----------------------	--------------

Best Antique Bloom - Pre 1900:

<i>Adolphe Audusson Var.</i>	Bob/Sandy Black
------------------------------	-----------------

Middle Georgia Camellia Society
February 28 - March 1, 2009, Macon, GA
Show Chairman - John Gamble

548 Blooms Displayed, 2000 Attendees, 24 Exhibitors

Gold Certificate:		Chuck/Bev Ritter
Silver Certificate:		John Newsome
Best Bloom in Show open:	<i>Linda Carol</i>	Chuck/Bev Ritter
Best Bloom in Show protected:	<i>Sea Foam</i>	Jim Pruckler
C. japonica open:		
Lg:	<i>Royal Velvet</i>	Ron/Elizabeth Wolfe
Md:	<i>Ville de Nantes</i>	Jim/Carolyn Dickson
Sm:	<i>Little Babe Var.</i>	Ron/Elizabeth Wolfe
C. japonica protected:		
Lg:	<i>Rosea Superba</i>	John Newsome
Md:	<i>Feathery Touch</i>	Ron/Elizabeth Wolfe
Sm:	<i>Tudor Baby</i>	John Newsome
C. Reticulata open:		
VLg:	<i>Hall's Pride Var.</i>	Esther Lawrence
Lg:	<i>Terrell Weaver</i>	Chuck/Bev Ritter
Md:	<i>Black Lace</i>	Chuck/Bev Ritter
C. Reticulata protected:		
VLg:	<i>John Hunt</i>	Steve/Gayle Lawrence
Lg:	<i>Larry Piet</i>	Steve/Gayle Lawrence
Md:	<i>Black Lace</i>	Steve/Gayle Lawrence
C. Hybrid (non-retic) open:		
Lg:	<i>Tom Perkins Var.</i>	Chuck/Bev Ritter
Md:	<i>Debbie</i>	Jim/Carolyn Dickson
Sm:	<i>Punkin</i>	Chuck/Bev Ritter
C. Hybrid (non-retic) protected:		
Lg:	<i>Delores Edwards</i>	John Newsome
Md:	<i>Debbie</i>	John Newsome
Sm:	<i>Spring Daze</i>	Steve/Gayle Lawrence
Best Miniature open:	<i>Little Slam</i>	Jim/Carolyn Dickson
Best Miniature protected:	<i>Man Size</i>	John Newsome
Tray of Three, same variety, open:		
	<i>Pat Pinkerton</i>	Chuck/Bev Ritter
Tray of three, same variety, protected:		
	<i>Tinsie</i>	John Newsome
Best Novice Bloom:	<i>Magnoliaflora</i>	JoAnn Dankel
Best Seedling or Mutant:		Chuck/Bev Ritter
C. sasanqua (& related species):	<i>Thurgenis</i>	Clayton Mathis
Best White Bloom:	<i>Nuccio's Gem</i>	Chuck/Bev Ritter

Fayetteville Camellia Club

March 7 - 8, 2009, Fayetteville, NC

Show Chairmen - Glenn Capps & Jim Darden

613 Blooms Exhibited, 200 Attendees, 22 Exhibitors

Gold Certificate (open):	Bob/Jean Williams
Silver Certificate (open):	Geary/Bonnie Serpas
Gold Certificate (protected):	Buck/Tyler Mizzell
Silver Certificate (protected):	Annabelle/Lew Fetterman

C. japonica open:

Lg/VLg:	<i>Miss Charleston Var.</i>	Geary/Bonnie Serpas
RU:	<i>Tomorrow Park Hill</i>	Geary/Bonnie Serpas
Md:	<i>Black Magic</i>	Bob/Jean Williams
Sm:	<i>Maroon and Gold</i>	Bob/Jean Williams

C. japonica protected:

Lg/VLg:	<i>Rena Swick</i>	Annabelle/Lew Fetterman
Md:	<i>Black Magic</i>	Buck/Tyler Mizzell
Sm:	<i>Black Tie</i>	Bob/Sandy Black

C. reticulata (Inc. hybrids w/retic parent) open:

<i>Frank Houser Var.</i>	Geary/Bonnie Serpas
--------------------------	---------------------

C. reticulata (Inc. hybrids w/retic parent) protected:

<i>Jim Pinkerton</i>	Annabelle/Lew Fetterman
----------------------	-------------------------

C. hybrid (w/no retic parent) protected or open:

<i>Spring Daze</i>	Buck/Tyler Mizzell
--------------------	--------------------

Best Miniature protected or open: *Man Size*

Bob/Sandy Black

Best Seedling protected or open: *Al Ewan*

Bob/Jean Williams

Best White Bloom protected or open:

<i>Melissa Anne</i>	Buck/Tyler Mizzell
---------------------	--------------------

Best Antique Bloom - Pre 1900:

<i>Pink Perfection</i>	Patricia Hutaff
------------------------	-----------------

Tray of Three, same variety, open:

<i>Lady Clare</i>	Richard/Betty Gail Buggeln
-------------------	----------------------------

Tray of Three, same variety, protected:

<i>Nuccio's Cameo</i>	Bob/Sandy Black
-----------------------	-----------------

Tray of Five, different varieties, protected:

Buck/Tyler Mizzell

Best Novice Bloom: *Pink Icicle*

Marvin Monday

LOCAL

Best Large Bloom unprotected (gibbed or not):

<i>Southern Charm</i>	Patricia Hutaff
-----------------------	-----------------

Best Medium Bloom unprotected (gibbed or not):

<i>Herme</i>	Patricia Hutaff
--------------	-----------------

Triangle Camellia Society
March 14, 2009 Raleigh, NC
Show Chairwoman - Lou Bryant
927 Blooms Displayed, 300 Attendees, 24 Exhibitors,
9 new & Renewing ACS Members

Gold Certificate:		Ed/Lou Powers
Silver Certificate:		Bill/Molly Howell
C. japonica open:		
Lg/VLg:	<i>Marie Bracey</i>	Doug/Sally Simon
RU:	<i>Tiffany Var.</i>	Ed/Lou Powers
Md:	<i>Betty Sheffield Pink Var.</i>	Ed/Lou Powers
RU:	<i>Ville de Nantes</i>	Bill/Molly Howell
Sm:	<i>Black Tie</i>	Doug/Sally Simon
RU:	<i>Grace Albritton</i>	Ed/Lou Powers
C. japonica protected:		
Lg/VLg:	<i>Helen Bower</i>	John Newsome
RU:	<i>Wendy</i>	Annabelle/Lew Fetterman
Md:	<i>Sea Foam</i>	Annabelle/Lew Fetterman
RU:	<i>Elizabeth Weaver Var.</i>	John Newsome
Sm:	<i>Grace Albritton</i>	Annabelle/Lew Fetterman
RU:	<i>Little Babe Var.</i>	John Newsome
Best Miniature open or protected:		
Best:	<i>Little Slam</i>	Dr. T. Winston Gouldin
RU:	<i>Man Size</i>	John Newsome
C. reticulata (Inc. hybrids w/retic parent) open or protected:		
Best:	<i>Larry Piet</i>	Annabelle/Lew Fetterman
RU:	<i>Dr. Clifford Parks</i>	Ed/Lou Powers
C. hybrid (w/no retic parent) open:		
Best:	<i>Julie</i>	Doug/Sally Simon
RU:	<i>Lavender Prince II</i>	Dr. T. Winston Gouldin
C. hybrid (w/no retic parent) protected:		
Best:	<i>Raspberry Flambe</i>	John Newsome
RU:	<i>Adorable</i>	Annabelle/Lew Fetterman
C. sasanqua (&related species):		
	<i>Star Above Star</i>	Dr. T. Winston Gouldin
Best Seedling:		Tom/Marie Bumgarner
Tray of Three, same variety, open:		
Best:	<i>Tudor Baby</i>	Molly Held
RU:	<i>Royal Velvet</i>	Bill/Molly Howell
Tray of Three, same variety, protected:		
Best:	<i>Tudor Baby</i>	Annabelle/Lew Fetterman

RU:	<i>Little Babe Var.</i>	John Newsome
Best White Bloom open:	<i>Frizzle White</i>	Ed/Lou Powers
LOCAL AWARD - Best flower by member of Triangle Camellia Society:		
	<i>Eleanor Martin Supreme</i>	Kimberly Howle
Best Antique Bloom - Pre 1900:	<i>Gigantea</i>	Doug/Sally Simon

Charlotte Camellia Society

March 14 - 15, 2009

Charlotte, NC

Show Chairperson - Nell Palmer

514 Blooms Exhibited, 350 Attendees, 23 Exhibitors

Gold Certificate (open):		Bob/Jean Williams
Silver Certificate (open):		Jim/Carolyn Dickson
Gold Certificate (protected):		Buck/Tyler Mizzell
Silver Certificate (protected):		Nancy Ballew
<i>C. japonica</i> open:		
Lg:	<i>Royal Velvet</i>	Bob/Jean Williams
Md:	<i>Cherie Shirah</i>	Bob/Jean Williams
Sm:	<i>Pixie</i>	Bob/Jean Williams
<i>C. japonica</i> protected:		
Lg:	<i>Tomorrow's Dawn</i>	Nancy Ballew
Md:	<i>Ville de Nantes</i>	Buck/Tyler Mizzell
Sm:	<i>Jackie D</i>	Buck/Tyler Mizzell
<i>C. reticulata</i> (Inc. hybrids w/retic parent):		
	<i>Frank Houser</i>	Geary/Bonnie Serpas
<i>C. hybrid</i> (w/no retic parent):		
	<i>Freedom Bell</i>	David/Anna Sheets
Best Miniature:	<i>Fircone</i>	Nancy Ballew
Best Seedling:	<i>Al Ewan</i>	Bob/Jean Williams
Best White Bloom <i>japonica</i> - over 2 1/2":		
	<i>Han-Ling-Snow</i>	Bob/Jean Williams
Tray of Three, same variety, open:		
	<i>Red Velvet</i>	Mary Lamperski
Tray of Three, different varieties, open:		Bob/Jean Williams
Tray of Three, same variety, protected:		
	<i>Midnight Magic</i>	Buck/Tyler Mizzell
Tray of Three, different varieties, protected:		Buck/Tyler Mizzell
Best Novice Bloom:	<i>Princess Lavender</i>	Frank Rubbo
Best Local Bloom:	<i>Betty Foy Sanders</i>	Yonatola Jona

Virginia Camellia Society

March 28, 2009

Norfolk, Virginia

Show Chairman - Larry Barlow

701 Blooms Displayed, 485 Attendees, 34 Exhibitors,

6 New ACS Memberships

Gold Certificate:		Ed/Lou Powers
Silver Certificate:		Bob/Sandy Black
C. japonica open:		
Lg:	<i>Alabama Tide</i>	Ed/Lou Powers
RU:	<i>Adolphe Audusson Var.</i>	Sandy Godwin
Md:	<i>Ville de Nantes</i>	Ed/Lou Powers
RU:	<i>Nuccio's Cameo</i>	Sandy Godwin
Sm:	<i>Kitty</i>	Carol Lee Sutherland
RU:	<i>Les Marbury</i>	Dr. T. Winston Gouldin
C. japonica protected:		
Lg:	<i>Grand Marshall</i>	Bob/Sandy Black
RU:	<i>Royal Velvel Var.</i>	Bob/Sandy Black
Md:	<i>Helen Beach</i>	Bob/Sandy Black
RU:	<i>Jean Clere</i>	Bob/Sandy Black
Sm:	<i>Grace Albritton</i>	Bob/Sandy Black
RU:	<i>Little Babe Var.</i>	Bob/Sandy Black
C. reticulata (Inc. hybrids w/retic parent):		
Best:	<i>Frank Houser Var.</i>	Bob/Sandy Black
RU:	<i>Miss Sally</i>	Doug/Sally Simon
C. hybrid (w/no retic parent):		
Best:	<i>Cile Mitchell</i>	Bob/Sandy Black
RU:	<i>Lavender Prince II</i>	Dr. T. Winston Gouldin
Best Miniature:	<i>Bonbon Red</i>	Ed/Lou Powers
RU:	<i>Man Size</i>	Sandy Godwin
Best White Bloom open:	<i>Melissa Anne</i>	Ed/Lou Powers
Best White Bloom protected:	<i>Tata</i>	Bob/Sandy Black
Best Novice Bloom:	<i>Kyo-Kanoko</i>	Jacki Welch
Tray of Three, same variety, open:		
Best:	<i>Lucky Star</i>	Doug/Sally Simon
RU:	<i>Pink Perfection</i>	Doug/Sally Simon
Tray of Three, same variety, protected:		
	<i>Royal Velvet Var.</i>	Bob/Sandy Black
Tray of Five, different varieties, open:		Ed/Lou Powers
Tray of Five, different varieties, protected:		Bob/Sandy Black
Best Seedling & Mutant:		
Lg:	<i>Al Ewan</i>	Robert/Jean Williams
Md:	<i>1</i>	A. Schwartz-Miller
Sm:	<i>Mel's 110</i>	Larry Barlow

The Camellia and Garden Club of Tallahassee

January 10 - 11, 2009, Tallahassee, Florida

Show Chairman - Stewart Tomlinson

1530 Blooms Displayed, 500 Attendees, 50 Exhibitors

Gold Certificate (open):		Cheng Lee
Silver Certificate (open):		Howard/Mary Rhodes
Gold Certificate (protected):		Randolph Maphis
Silver Certificate (protected):		Richard/Katherine Mims
Best Bloom Open:	<i>Frank Houser</i>	Esther Lawrence
Best Bloom Prot.:	<i>Linda Carol</i>	Randolph Maphis
Best Kay Berridge	<i>Kay Berridge</i>	Donna/Charles Nichols
<i>C. japonica</i> open:		
Lg/VLg:	<i>Veiled Beauty</i>	Charles Watford
Md:	<i>Elaine's Betty Red</i>	Cheng Lee
Sm:	<i>Red Hots</i>	Donna/Charles Nichols
<i>C. japonica</i> treated protected:		
Lg/VLg:	<i>Georgia National Fair</i>	Howard/ Mary Rhodes
Md:	<i>White Velvet</i>	Richard/ Katherine Mims
Sm:	<i>Black Gold</i>	Steve/Gayle Lawrence
<i>C. reticulata</i> (Inc. hybrids w/retic parent) open:		
VLg:	<i>Frank Houser Var.</i>	Cheng Lee
Lg:	<i>Valentine Day Var.</i>	Howard/Mary Rhodes
Md:	<i>Black Lace Peony Var.</i>	Donna/Charles Nichols
<i>C. reticulata</i> (Inc. hybrids w/retic parent) protected:		
VLg:	<i>Frank Houser</i>	Howard/Mary Rhodes
Lg:	<i>Bill Goertz Var.</i>	Howard/Mary Rhodes
Md:	<i>Elizabeth B. Hunt</i>	Steve/Gayle Lawrence
<i>C. hybrid</i> (w/no retic parent) open:		
Lg:	<i>Mona Jury</i>	Cheng Lee
Md:	<i>Julie</i>	Charles Watford
Sm:	<i>Spring Daze</i>	Howard/Mary Rhodes
<i>C. hybrid</i> (w/no retic parent) protected:		
Lg:	<i>Elsie Jury</i>	Randolph Maphis
Md:	<i>Julie Var.</i>	Steve/Gayle Lawrence
Sm:	<i>Buttons n Bows</i>	Richard/Katherine Mims
Best Miniature open:	<i>Little Slam Pink</i>	Donna/Charles Nichols
Best Miniature protected:	<i>Bonbon</i>	Steve/Gayle Lawrence
Best White Bloom open:	<i>Swan Lake</i>	Esther Lawrence
Best White Bloom protected:	<i>Sea Foam</i>	Howard/Mary Rhodes
Tray of Three, same variety, open:		
	<i>Grand Marshall</i>	Esther Lawrence
Tray of Three, same variety, protected:		
	<i>Frank Houser</i>	Mickey/Mary Moore
Tray of Five, different varieties, open:		Cheng Lee
Tray of Five, different varieties, protected:		Randolph Maphis



Do your part. Help save Angel Oak in Charleston, S.C.
<http://www.savetheangeloak.org>